



LINEAR ACTUATOR

FD series

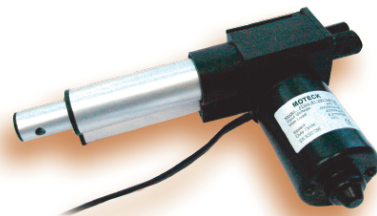
For Furniture, Home Care, and Fitness Equipments
 12/24V DC Motor + 110/230V AC Converter
 Max. Load: 6000N (push) /4000N (pull)
 Max. Speed: 8.3mm/s
 Compatible w/ T, TSC, TI, CB4M...Control Box
 T control Box Can be attached on the Actuator

FEATURE:

- Low Noise Level
- Aluminum Extension & Outer Tubes
- Clevis to Clevis Mounting
- Strokes: 50, 100, 150, 200, 250, 300mm
(other stroke available)
- One Converter for up to 3 Actuators
- Safety Key on Handset-Available
- Emergency Lowering Function w/ 9V DC Battery x2
- Working Temperature: -20°C to +65°C
- Duty Cycle: 10% or 2min continuous operation in 20 min

OPTION:

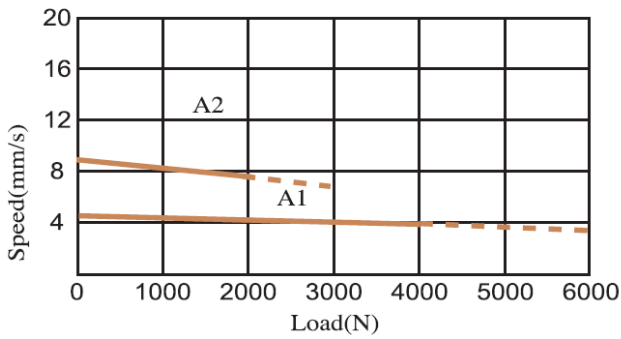
- Hall Effect Sensor
- Push Only
- Safety Nut



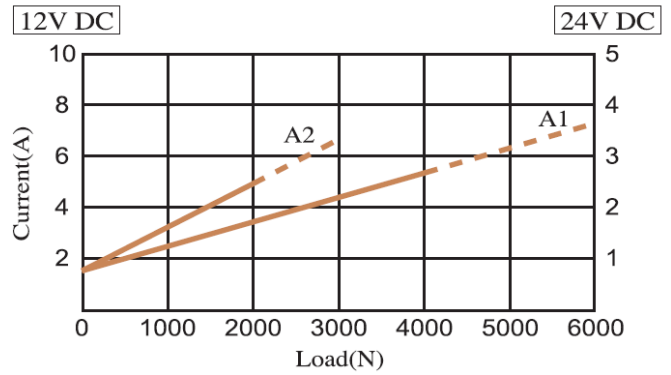
Model No. Designations:					
FD	• 24	• A1	• 228.278	• C1 2	• HS.PO...
	Voltage	ACME	A . B	rear connector	option
	12-12V DC	A1:Single Thread	A:Retracted Length	front connector	HS: Hall Effect Sensor x1
	24-24V DC	A2: Dual Thread	B:Extended Length		HS2: Hall Effect Sensor x2
			Stroke= B - A		PO: Push Only

Stroke	50	100	150	200	250	300
A	228	278	338	388	448	498
B	278	378	488	588	698	798

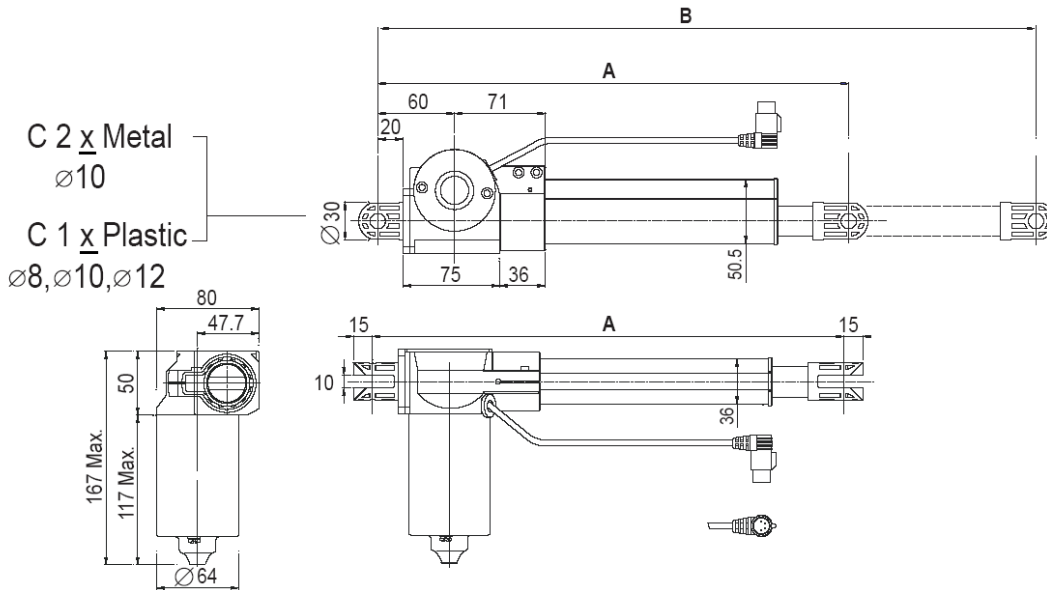
Speed vs Load



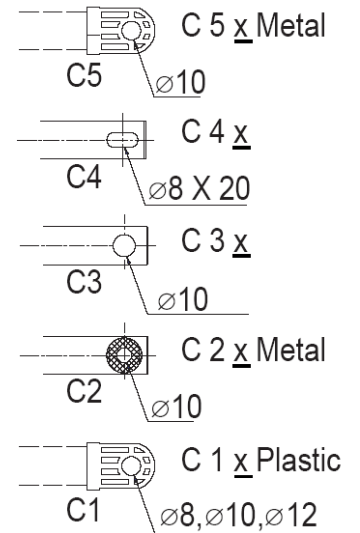
Current vs Load



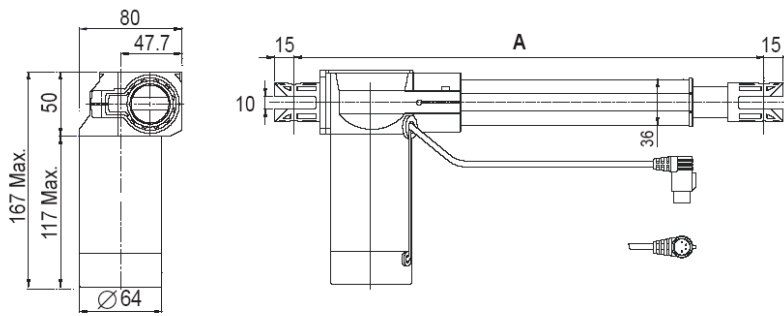
Rear Connector



Front Connector



Drawing of Hall Effect Sensor Version



(mm)