

VENTURE MFG. CO.

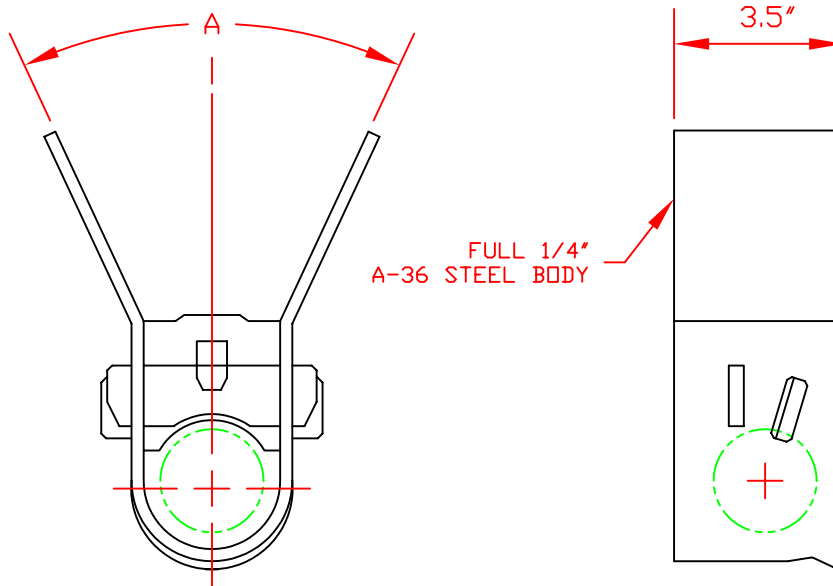
HIGH CAPACITY COUPLERS—MODEL 3000 SERIES

FOR MFR'D HOUSING ONLY (NOT FOR REUSE)

*FOR 2-5/16" DIA. BALL

PRODUCT FEATURES:

FUNCTIONAL SAFETY
FITS TOP MOUNTED
AND UNDERSLUNG FRAMES
OMIT DRAWBAR NOTCHING
LESS WELDING REQUIRED
SELF LOCATING
RUGGED FABRICATION
MAX. RATED CAPACITY



COUPLER OPERATION

1. LIFT SAFETY LATCH
AND PULL PLATE CROSSWISE
TO "OPEN" POSITION
2. PUSH CROSSPLATE IN
TO "LOCK" POSITION
INSERT LOCK THRU
PLATE TO SECURE

| COUPLER DATA | | RATED LOAD CAPACITY | |
|--------------|----------------|----------------------|-------------------------|
| MODEL NO. | BODY "A" ANGLE | TONGUE WT. (TW) LBS. | GR. VEH. WT. (GVW) LBS. |
| 3050 | 50 | 12,500 | 50,000 |
| 3060 | 60 | 12,500 | 50,000 |

* ATTENTION:
COUPLER EXCEEDS SAE CLASS 4 CAPACITIES
USE WITH HIGH CAPACITY 2-5/16" HITCHBALL
VENTURE PN HB-5002, OR EQUIVALENT

3636 Dayton Park Dr., Dayton, Ohio 45414
Tel: (937) 233-6832 Fax: (937) 233-8485

VENTURE MFG. CO.

JUN 2004

C-3000