

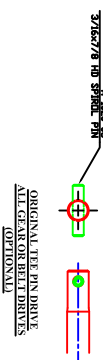
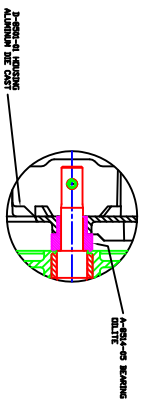
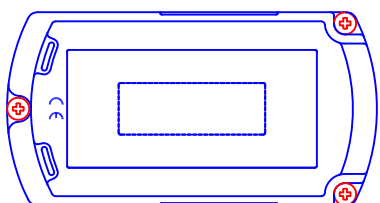
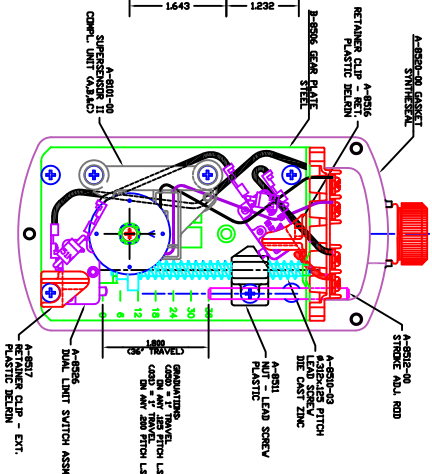
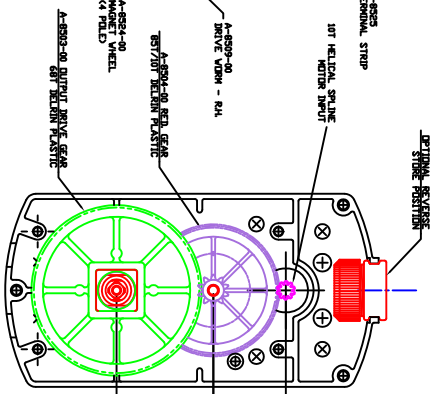
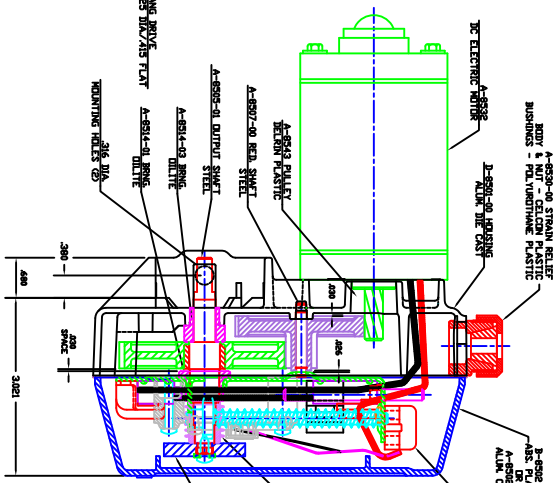
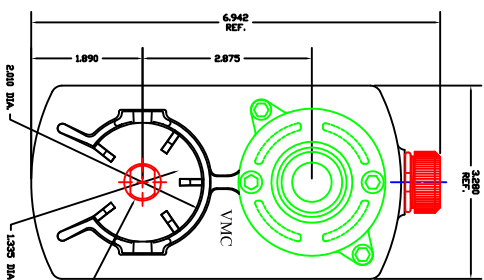
DEC. TOL. U.O.S.
 .00 = ±.01
 .000 = ±.005



8500 SERIES GEARBOX BASIC DIMENSIONS

DATE	MAR 25 1998	VENTURE MFG. CO.		
SCALE	FULL			

-
- Technical drawing of a container with dimensions and a crane hook. The container is shown in a side view, with a crane hook positioned above it. The dimensions are as follows:
- Overall height: 7.800 MET.
 - Height of the container body: 6.000 MET.
 - Height of the crane hook: 1.800 MET.
- The drawing includes a crane hook at the top, a container body in the middle, and a base at the bottom. The container body is divided into two sections, with a dashed line indicating the centerline. The crane hook is shown in a side view, with a hook and a base. The base is shown in a side view, with a hook and a base.



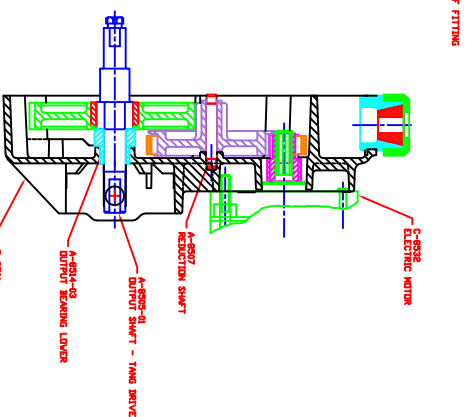
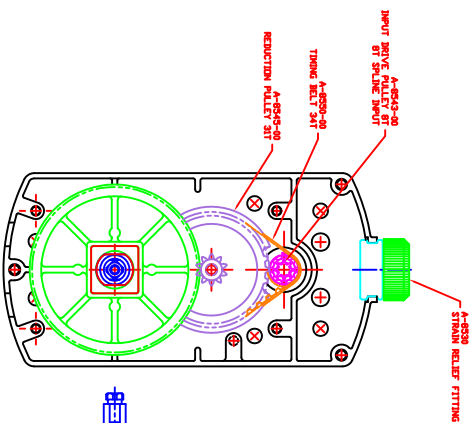
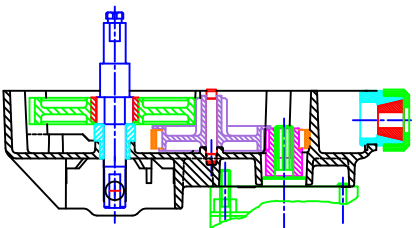
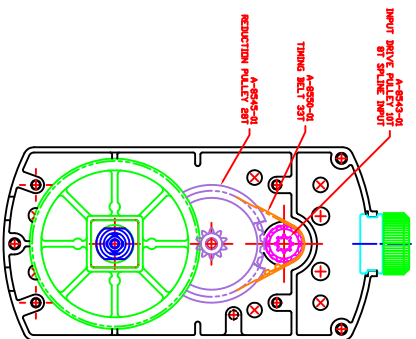
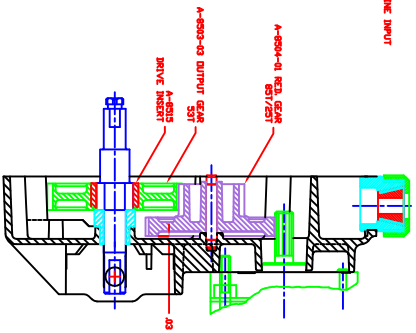
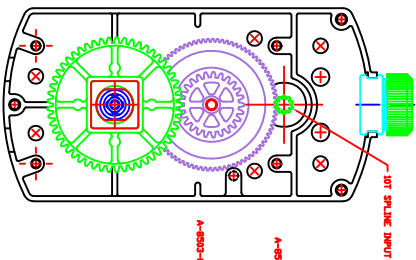
8900 SERIES ~ SPECIAL PRODUCTS
(MODIFICATIONS OF 8500 SERIES)
SEE THESE DRAWINGS
D-8954 HILL-ROM HEAD GEARBOX M-8954
D-8955 HILL-ROM HI-LO GEARBOX M-8955
C-8956 HILL-ROM KNEE GEARBOX M-8956

8500. SERIES GEARBOX
58 TO 1 RATIO GEARBOX SHOWN ABOVE
ORIGINAL DESIGN OF MAY 1987 (SEE ORIG. TRACKING)

(2). BELT DRIVE OPTIONS & 18:1 GEARBOX ON SHEET NO. 2

(3). SENSOR OPTIONS & DETAILS ON SHEET NO. 3

VARIOUS CLUTCH DESIGN CAPACITIES & DETAILS -
FLAT GEAR PLATE DESIGNS W/O SENSORS & LIMITS
& 88:1 CLUTCH GEARBOX & 4:1 BELT DRIVEN
OPTION DETAILS ON SHEET NO. 4



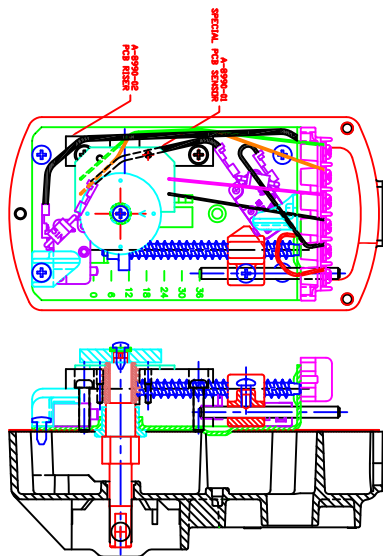
GEAR DRIVE BOX
18.0 TO 1.0 RATIO
HD SQ OUTPUT DRIVE DESIGN

BELT DRIVE GEARBOX
19.1 TO 1.0 RATIO

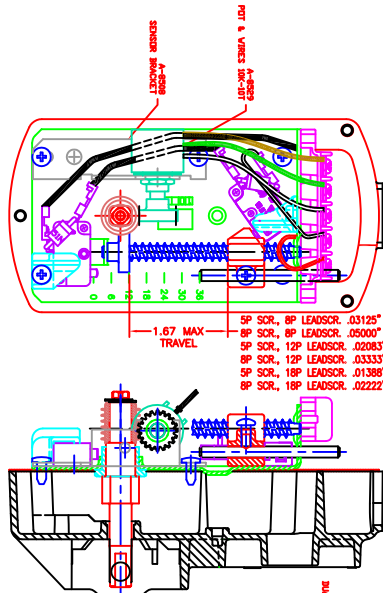
BELT DRIVE GEARBOX
26.35 TO 1.0 RATIO

NOTE: A-8504-01 OUTPUT GEAR SHOWN ABOVE
NOT TOOLED AS OF JANUARY 2001

8500 SERIES GEARBOXES WITH
(2) BELT DRIVE DESIGNS &
(1) 18:1 RATIO GEAR DRIVE DESIGN
(SHOWN WITH TOP ASSEMBLIES REMOVED)



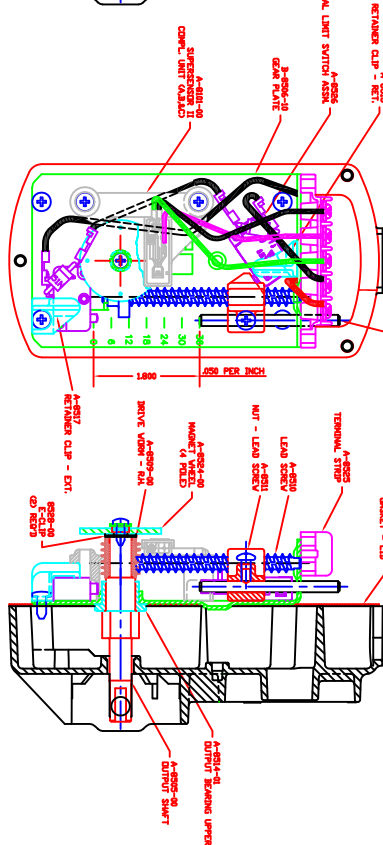
STD. GEARBOX WITH
"QUADRATURE" SENSOR
WITH LIMIT SWITCHES
C-1998



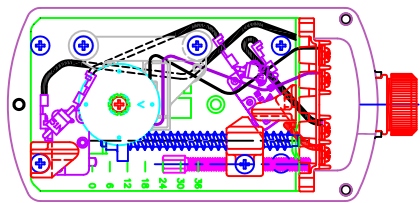
STD. GEARBOX
WITH POTENTIOMETER SENSOR
10K - 10 TURN OR 1K - 10 TURN
WITH LIMIT SWITCHES
C-1988

MAXIMUM TRAVEL WITH LIMITS:
5P SCREW AND 8P LEADSCREW = 53"
8P SCREW AND 8P LEADSCREW = 33"
5P SCREW AND 12P LEADSCREW = 80"
8P SCREW AND 12P LEADSCREW = 90"
5P SCREW AND 18P LEADSCREW = 120"
8P SCREW AND 18P LEADSCREW = 75"
MAX STROKE: 100" POT

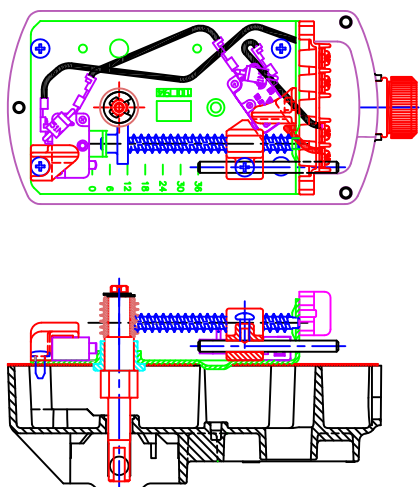
W/ 20T GEAR: 40" ON 5P SCREW AND 25" ON 8P SCREW
W/ 25T GEAR: 50" ON 5P SCREW AND 35" ON 8P SCREW
W/ 32T GEAR: 64" ON 5P SCREW AND 40" ON 8P SCREW



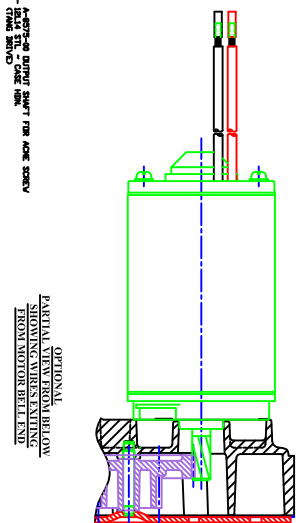
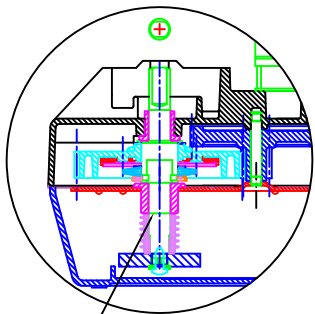
STD. GEARBOX WITH
LIMIT SWITCHES ONLY
WITH LIMIT SWITCHES
C-1999



STD. GEARBOX WITH
SSR REED SWITCH SENSOR
WITH LIMIT SWITCHES
OPTIONAL THREADED ADJUSTMENT ROD
C-1988

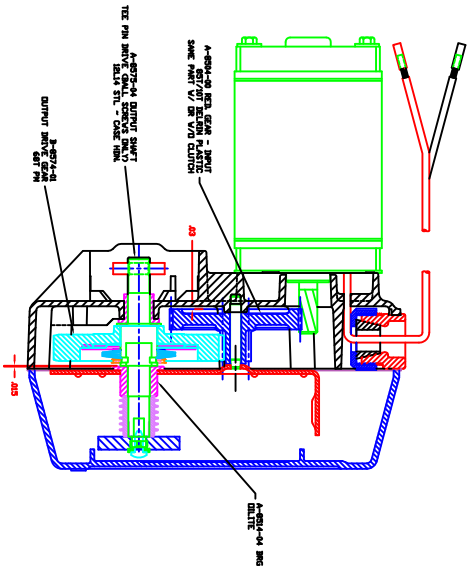


STD. GEARBOX WITH
LIMIT SWITCHES ONLY OPTION
C-1988

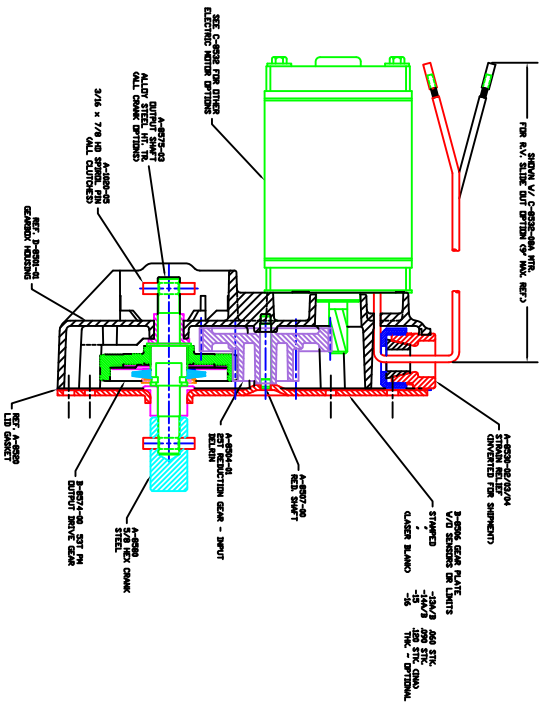


OPTIONAL
PARTIAL VIEW FROM BELOW
SHOWING INPUT SHAFT
FROM MOTOR BELT END

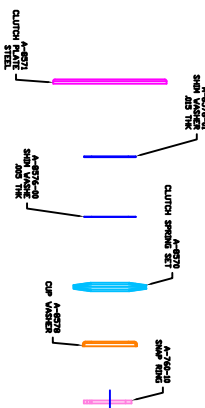
581 GEARBOX WITH
CLUTCH OPTION
FOR A-400-40 DRIVE
(INACTIVE PLAN 200)



581 GEARBOX WITH
CLUTCH OPTION
FOR A-400-40 DRIVE
LIMITS FOR ANY SENSOR
SHOWN ON SHEET NO. 3

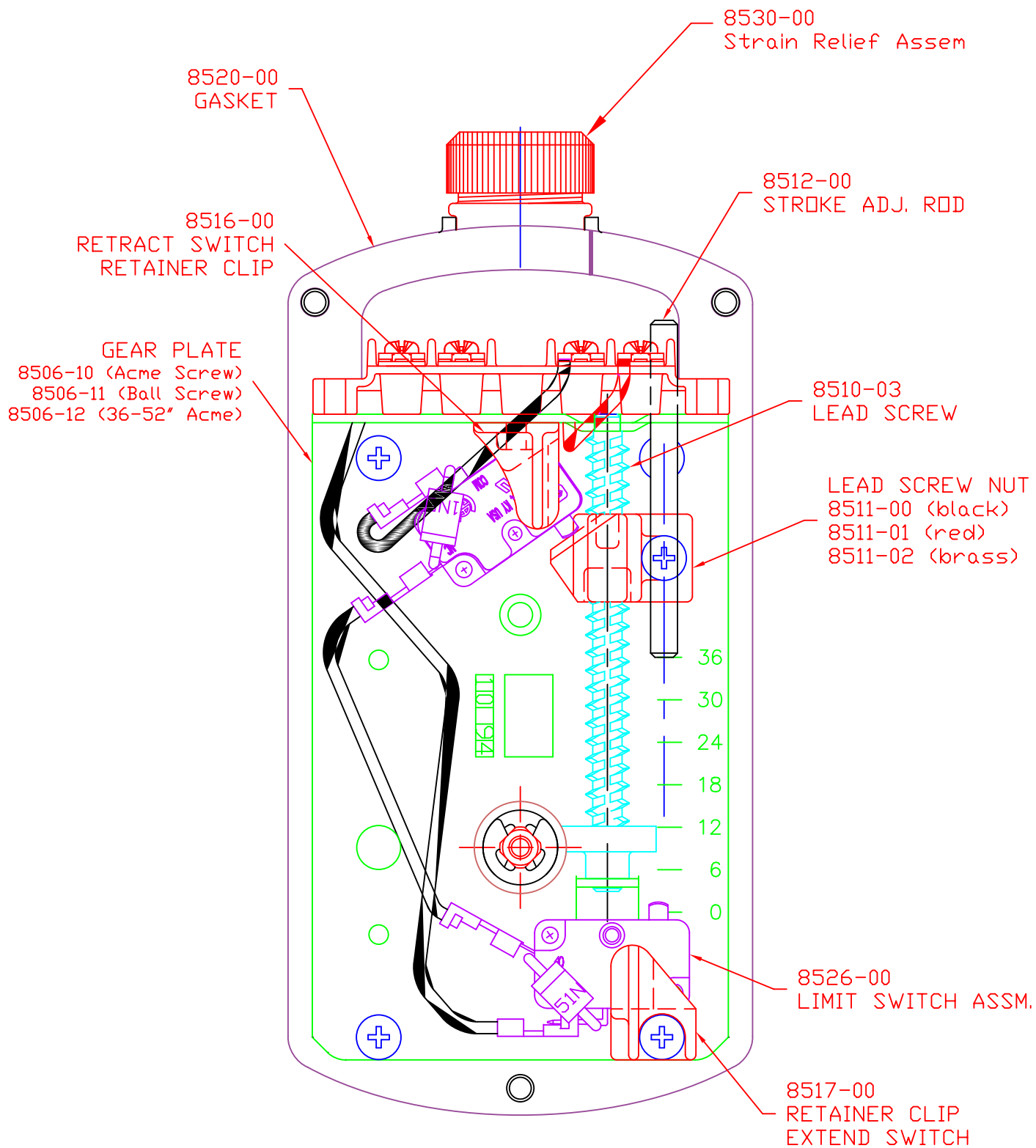


181 GEARBOX WITH CLUTCH OPTION
SHOWN SET UP FOR
A-400-40 DRIVE
SENSORS WITH THE NOT OPTIONAL
LID COVER IS AN OPTION
(PART NO. 438701-1)
(1999)



COMMON CLUTCH DETAILS
APPLICABLE TO ANY GBX (NOT AVAILABLE ON BELT DRIVE GEAR MOTORS)
CAPACITY SETTING RANGE 750-2500 LBS.
ADJUST LOAD USING .005-.015 SHIM WASHERS (3)
(SHOWN ABOVE) TO SUIT

8800 SERIES GEARBOX
SPECIAL CONFIGURATIONS
181 GEARBOX WITH CLUTCH FOR EITHER BALL OR ACME DRIVES
181 GEARBOX WITH PLAN GEARBOX
CLUTCH PARTS -- SETTINGS & APPLICATION DETAILS

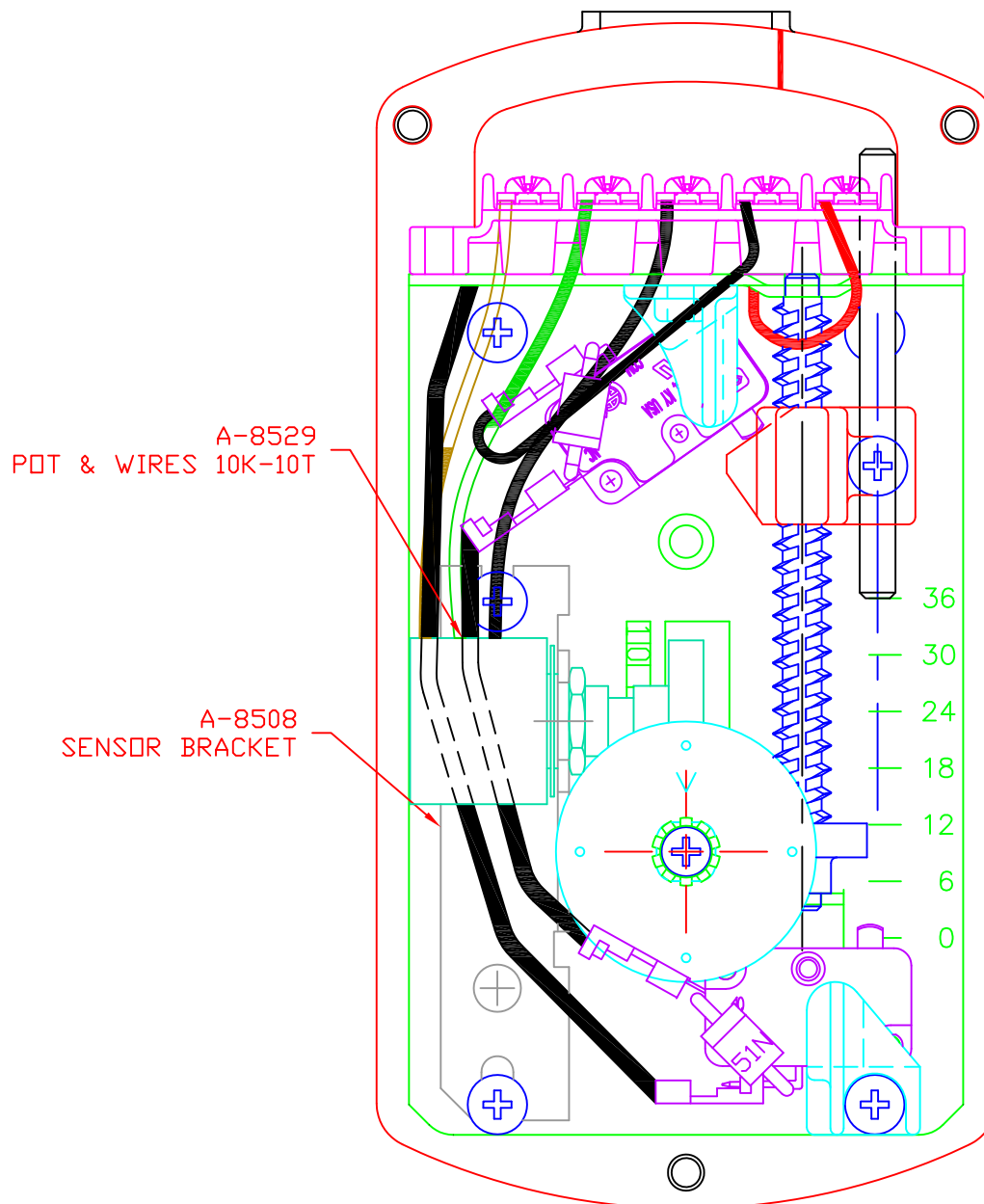


LIMIT SWITCH LAYOUT

DATE
NOV. 2001

VENTURE MFG. CO.

SCALE
FULL

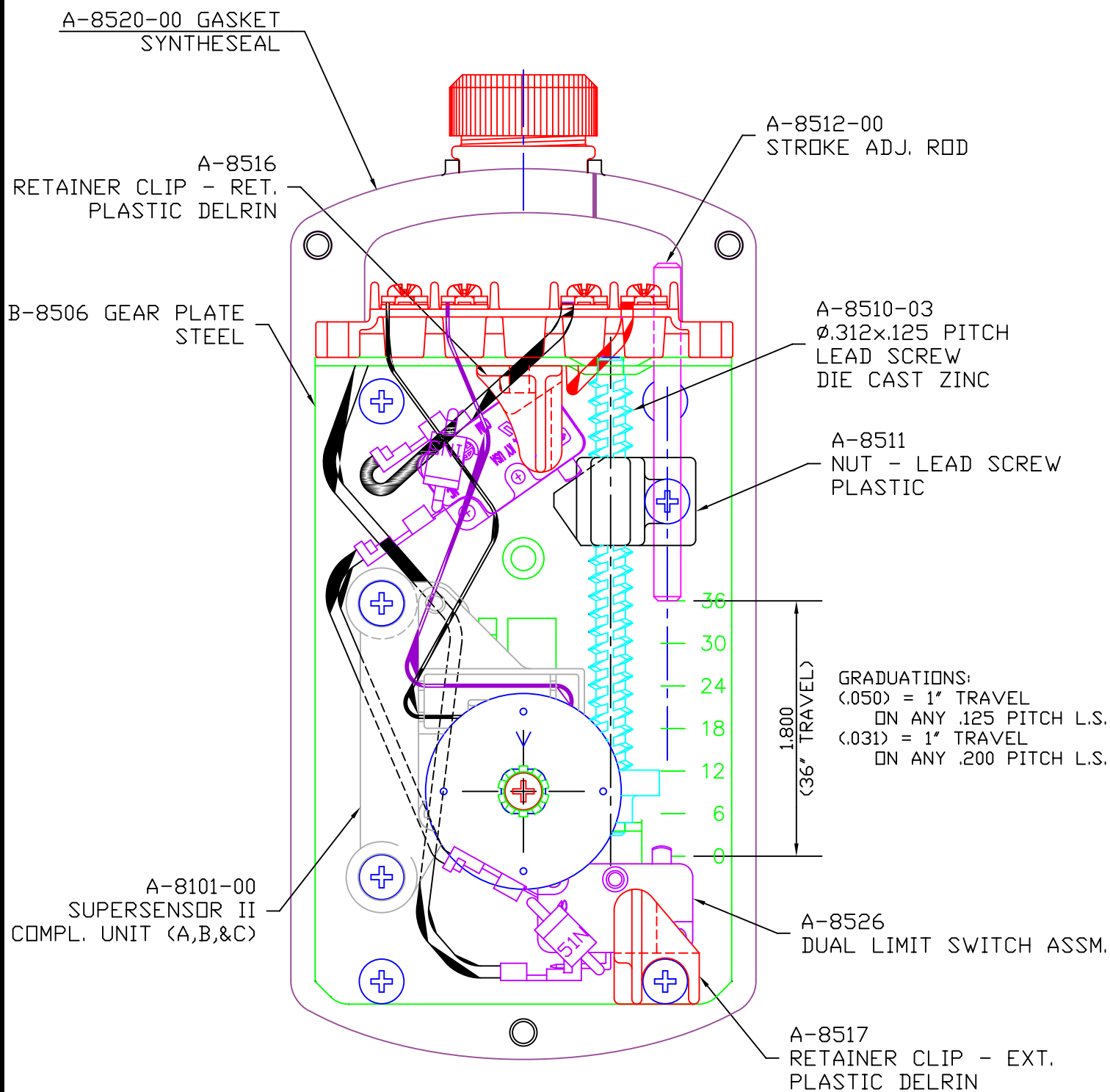


PLS GEARBOX VIEW
WITH LID REMOVED

DATE
NOV. 2001

VENTURE MFG. CO.

SCALE
FULL



**RLS GEARBOX VIEW
WITH LID REMOVED**

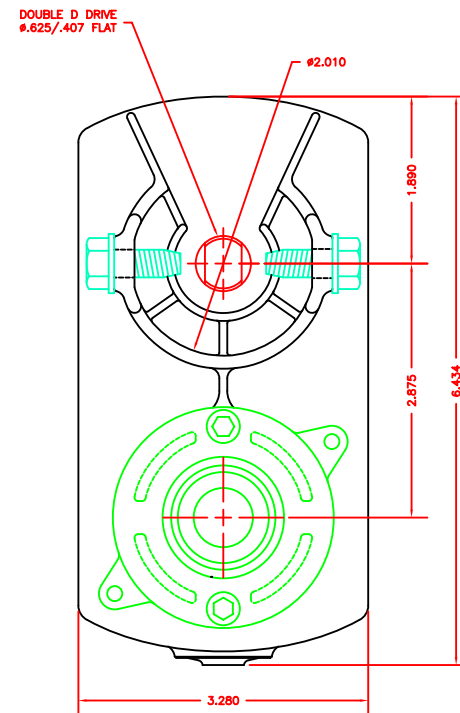
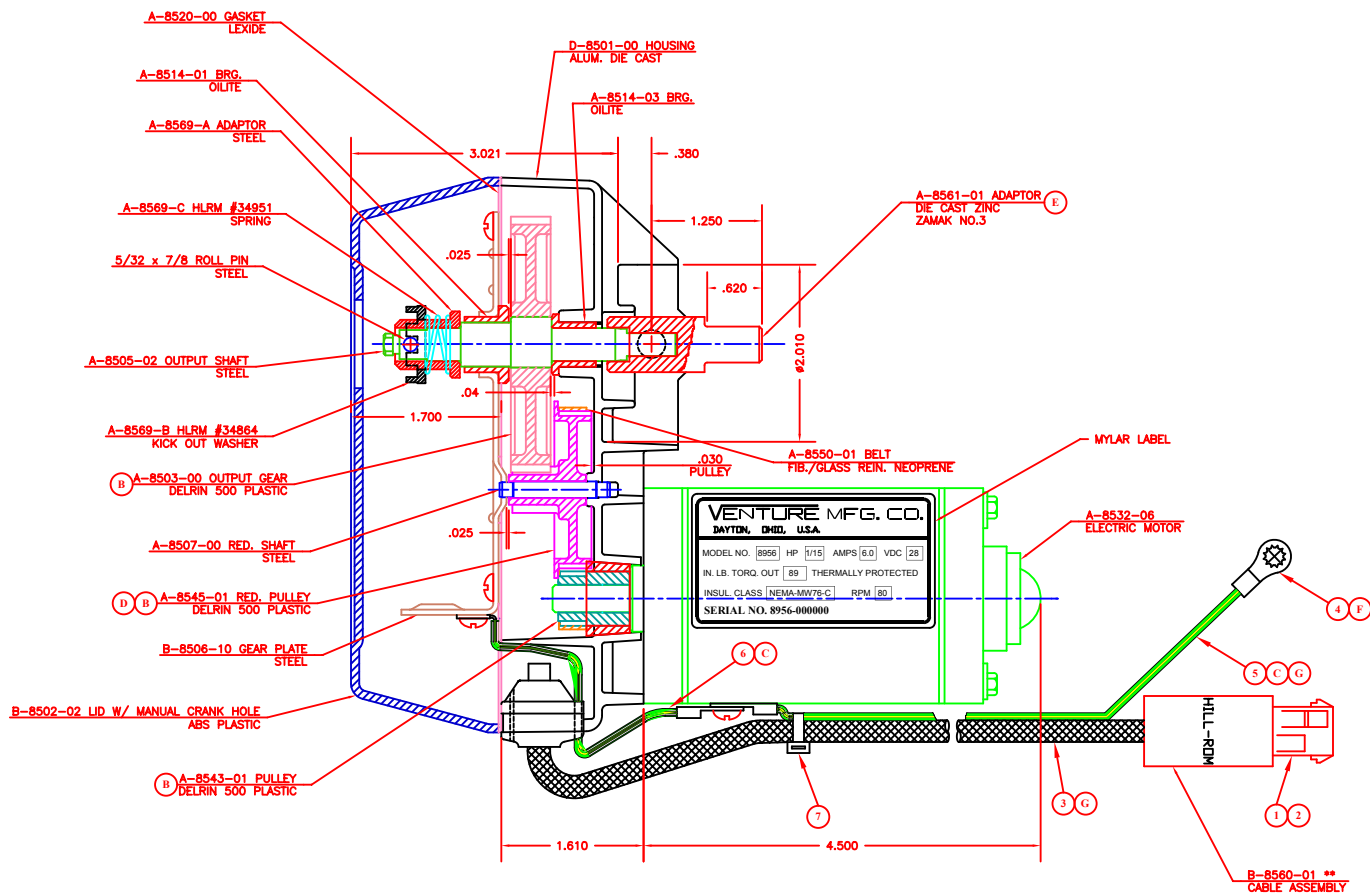
DATE
NOV. 2001

VENTURE MFG. CO.

SCALE
FULL

- (A) .560 FLAT WAS .530 ~ FEB. 10, 1999 ~ REF ECN NO. HLRM 13811
(B) MATERIAL CHANGED ~ JULY 18, 1999 ~ REF. ECN NO. HLRM 14210
(C) GRN/YEL GROUND WIRE WAS BRAIDED GROUND STRAP ~ MAR. 9, 2000 ~ REF. ECN NO. HLRM 15015
(D) UPDATED 8545-01 RED. PULLEY TO REV. D ~ APR. 10, 2000
(E) MATERIAL CHANGED ~ NOV. 3, 2000 ~ REF. ECN NO. HLRM MYS4A
DELETED A-1020-05 ROLL PIN

- (F) REMOVED TERMINAL STRIP AND AMP 61795-1 WAS 61436-1 ~ MARCH 12, 2001 ~ REF ECN NO. HLRM UUNWQ
(G) SHORTENED PIGTAIL 4", GND WIRE 2", AND REMOVED 1 TIE ~ MAY 18, 2001 ~ REF ECN NO. HLRM WZRC1



MOTOR MFG. TYPE AND RPM	ARKANSAS GENERAL INDUSTRIES PERMANENT MAGNET, 2000 @ 30 OZ. IN.
VOLTAGE	28 VOLTS DC
WINDING INSULATION CLASS	NEMA - MW76-C
DVV	.70 MA MAX. @ 1500 VRMS FOR 1 SEC. OR .58 MA MAX. @ 1240 FOR 60 SEC. FROM LEADS TO CASE OPENING TEMPERATURE WITHIN THE OVER LOAD PROTECTOR RANGE.
MOTOR CURRENT NO LOAD @ RATED VOLTAGE	.5 AMPS
MOTOR CURRENT FULL RATED LOAD @ RATED VOLTAGE	6 AMPS
MOTOR CURRENT LOCKED ROTOR @ RATED VOLTAGE	11 AMPS
AVERAGE TIME FOR LOCKED ROTOR TO TRIP INTERNAL PROTECTION OF MOTOR @ RATED VOLTAGE	10 SEC.
TYPE OF INTERNAL MOTOR PROTECTION	THERMAL
MFG. MFG PART NUMBER, AGENCY APPROVALS AND NUMBER OF INTERNAL MOTOR PROTECTOR	RAYCHEM, RXE 300, UL#E74889, CSA# CA7816SC, (1) 80-85°C, 11-3.0, 11-6.0, 40 AMPS MAX.
HORSE POWER @ RATED VOLTAGE	1/15 HP.
MAXIMUM RATED TORQUE OF MOTOR @ RATED VOLTAGE	75 OZ. IN.
STALL TORQUE OF MOTOR @ RATED VOLTAGE	190 OZ. IN.
GEARBOX NOISE LEVEL (IN BED)	40-50 dBA

CABLE ASSEMBLY, B-8560-01, BILL OF MATERIAL			
ITEM	QUANTITY	SUPPLIER NO.	DESCRIPTION
1	1	AMP 350778-1	2 PDS MATE-N-LOK
2	2	AMP 350218-1	PIN TERMINAL
3	1	BELDEN 369558	9' 2 CONDUCTOR 18 GAGE CABLE
4	4	AMP 61795-1	TERMINALS
5	1	ASTRO 3658-0000	14' 18 GA. 16/28 STRANDED COPPER WIRE UL 1007
6	1	ASTRO 3658-0000	5' 18 GA. 16/28 STRANDED COPPER WIRE UL 1007
7	1	TYTON T-1BR	TIE WRAPS

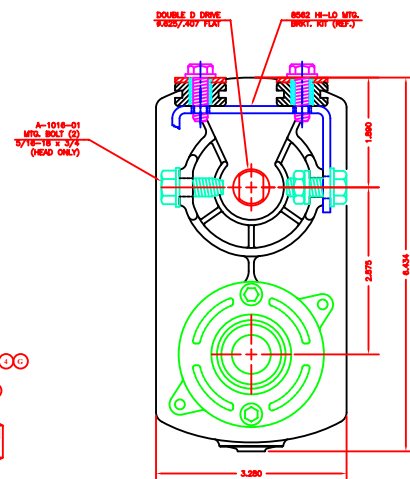
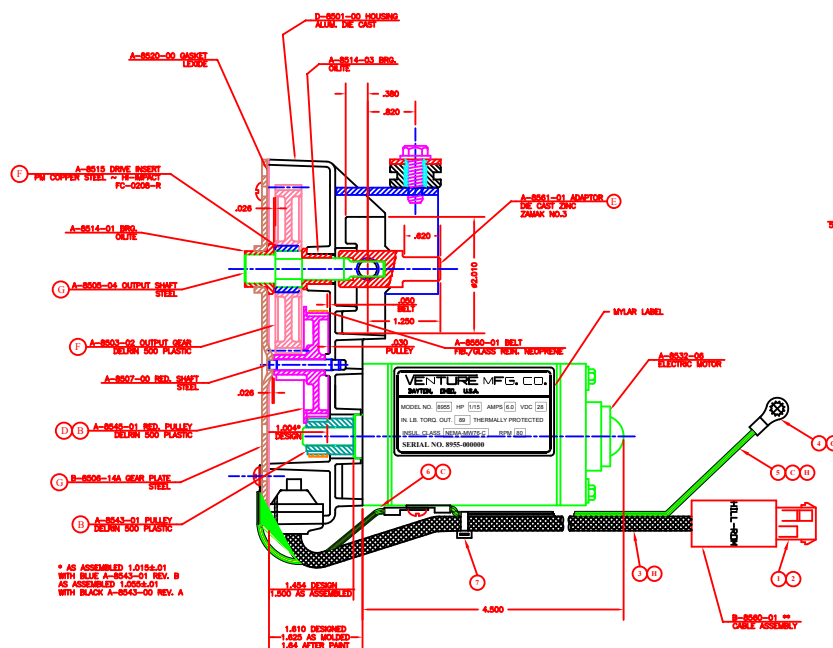
***NOTE: OUTPUT SHAFT OF GEARBOX ROTATES "CW" (AS VIEWED THRU LID) WHEN POSITIVE VDC IS APPLIED TO PIN #1 OF CABLE ASSEMBLY CONNECTOR

M-8956 (REF. HLRM # 6340102)
GEARBOX ASSEMBLY W/ MANUAL CRANK
HILL-ROM 28VDC
KNEE ACTUATOR
19 TO 1 RATIO BELT DRIVE (90 RPM)
WT. ~ 4.18 LBS.

REL. NOV. 9 1998

DATE AUG 24 1998	VENTURE MFG. CO.	
SCALE FULL	C-8956 ASSY	G

-
- Technical drawing showing a cross-sectional view of a 1.5A-50W tube socket assembly. The drawing includes dimensions and labels for various components:
- Dimensions:**
 - Top horizontal dimension: .82
 - Top horizontal dimension: 1.06
 - Bottom horizontal dimension: .025
 - Bottom horizontal dimension: 2.08 O.A.L.
 - Bottom right vertical dimension: .34 MIN.
 - Labels:**
 - 1.5A-50W AMPERET (pointing to the top contact area)
 - STD. 1.5A-50W LINE JOY COUPLING (pointing to the central coupling part)



CABLE ASSEMBLY, B-8560-01, BILL OF MATERIAL			
ITEM	QUANTITY	SUPPLIER NO.	DESCRIPTION
1	1	AMP 303778-1	2 PDR RATE-10-LEK
2	2	AMP 303519-1	PDR TERMINAL
3	1	HELENS 309508	9" 2 CONDUCTOR CABLE, 200V
4	4	AMP 61790-1	TERMINALS
5	1	ASTRO 3430-0000	14" 500 VOLT STRANDED CABLE, 200V, 100' L
6	1	ASTRO 3430-0000	5" 500 VOLT STRANDED CABLE, 200V, 100' L
7	1	TYTON T-10R	TS, W/MPZ

NOTE: OUTPUT SHAFT OF GEARBOX ROTATES "CW" (AS VIEWED FROM LHD)
WHEN POSITIVE VDC IS APPLIED TO PIN #1 OF CABLE ASSEMBLY
CONNECTOR

M-8955 (REF. HLRM #6340103)
GEARBOX ASSEMBLY - HI-LO
SAME AS HEAD GBX EXCEPT FOR
ASSEMBLY OF 8562 HI-LO MTG.
BRKT KIT AS SHOWN ABOVE
WT. ~ 4.57 LBS.

M-8954 (REF. HLRM #6340101)
GEARBOX ASSEMBLY - HEAD
HILL-ROM 28VIDC
19 TO 1 RATIO BELT DRIVE (80 RPM)
WT. ~ 4.14 LBS.

REL. NOV. 9 1998