

1200 SERIES ACTUATOR

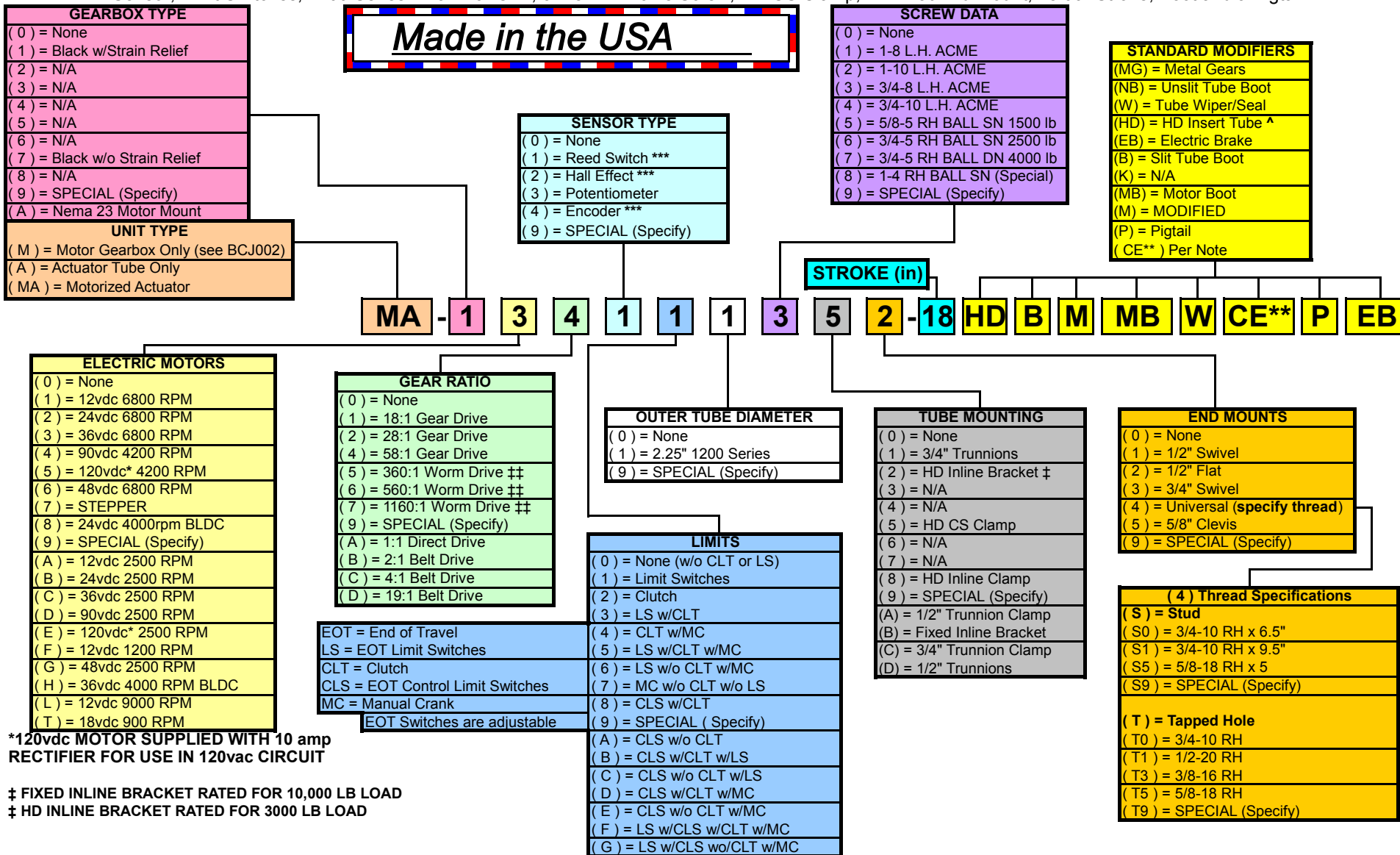
LITERAL/NUMERIC PART No. CODE SYSTEM

BCJ012

Rev: 02

print date: 3/31/17

EXAMPLE: Item No. MA-134111352-18.00BP = Motorized Actuator with a black gearbox, 36vdc 6800 rpm PMDC Motor, 58:1 Ratio, Reed Sensor, Limit Switches, 1200 Series 2.25" Dia. O.T., 3/4-8 L.H. Acme Screw, HD CS Clamp, 1/2" Flat End Mount, 18.00" Stroke, Boot and a Pigtail



*120vdc MOTOR SUPPLIED WITH 10 amp
RECTIFIER FOR USE IN 120vac CIRCUIT

‡ FIXED INLINE BRACKET RATED FOR 10,000 LB LOAD

‡ HD INLINE BRACKET RATED FOR 3000 LB LOAD

** CE Certification available on 12v, 24v & 36v models only and comply with;
Machinery Directive: EN60204-1: 2006 and EMC: EN55014-1: 2006, EN 61000-6-4: 2007

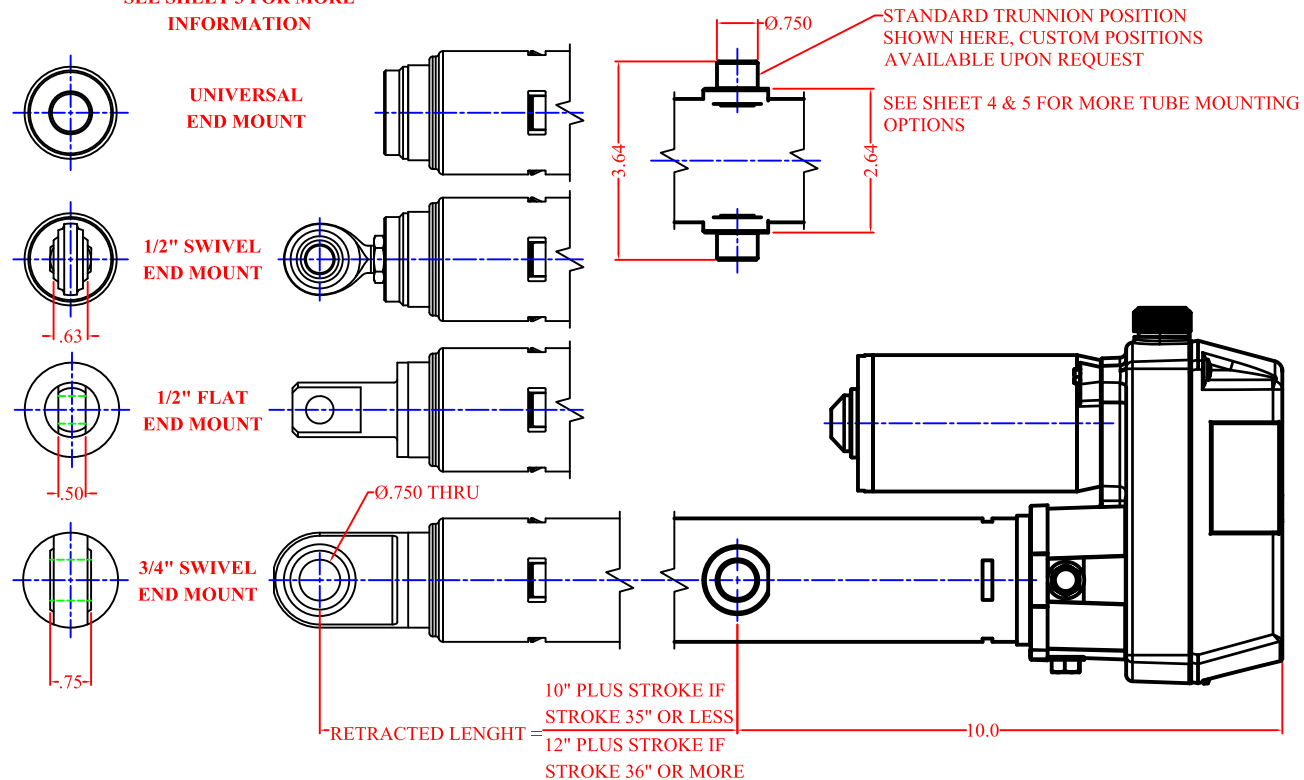
*** SPECIFY DESIRED PPR (Pulses Per Revolution) or PPI (Pulses Per Inch)

‡ These ratios are achieved by combining the 8500 gearbox with the 890 series 20:1 worm drive gearbox. Limit switches are not available on these units.

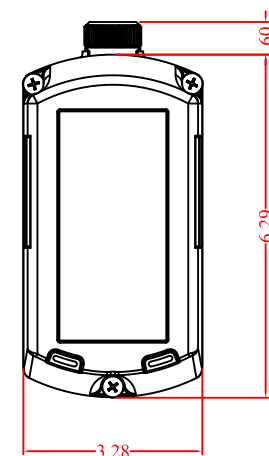
^ HD Insert Tube used to increase compression load capacity when needed.

NOTE: STD U.O.S.
ACME SCREWS (A) ARE LEFT HAND (L.H.) PITCH
BALL SCREWS (B) ARE RIGHT HAND (R.H.) PITCH

**END MOUNT OPTIONS
SEE SHEET 3 FOR MORE
INFORMATION**



CUSTOM STROKES AVAILABLE UPON REQUEST



1200 SERIES BALL SCREW

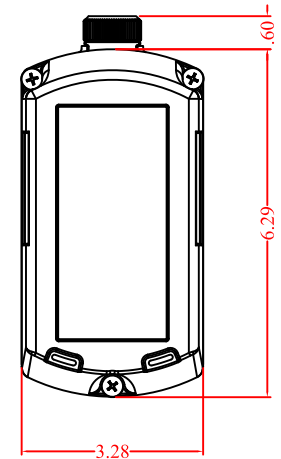
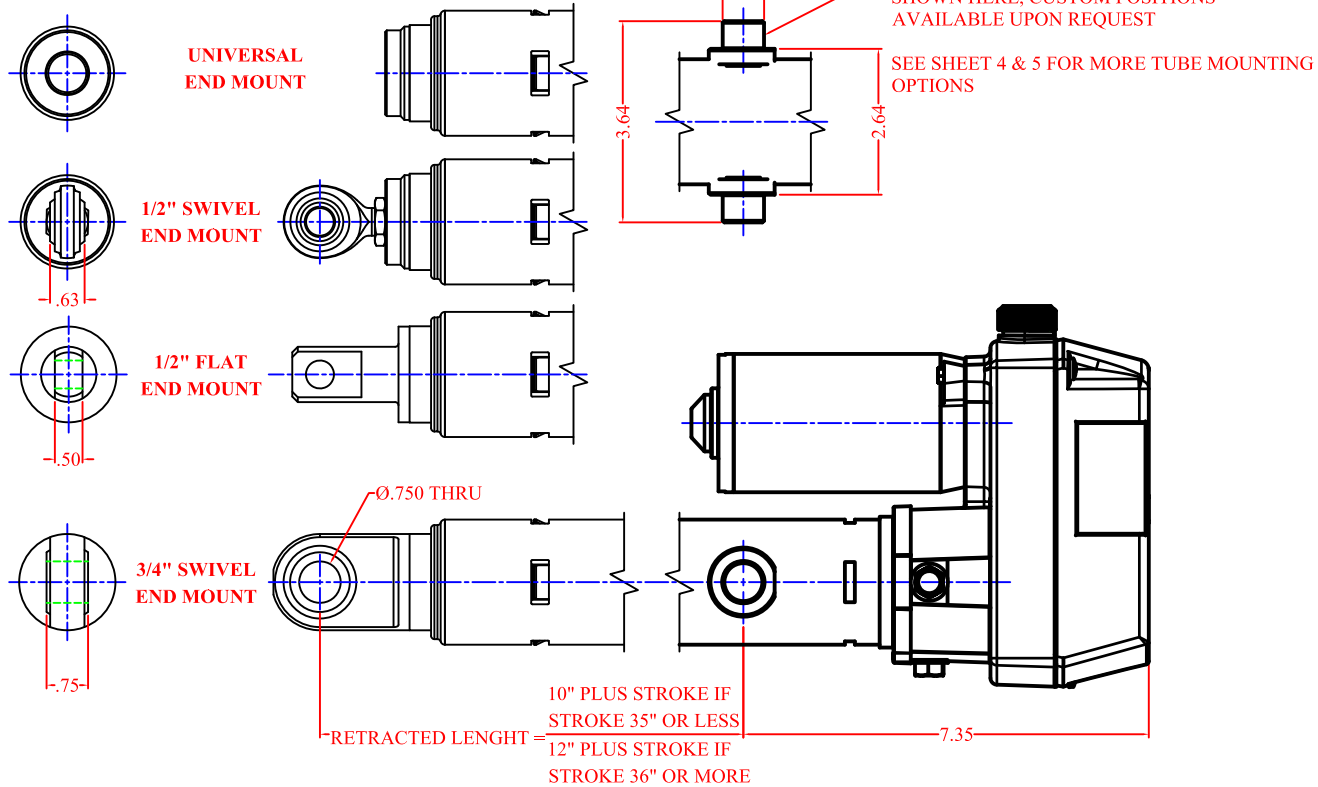
ACTUATOR PERFORMANCE
AND SELECTION DATA
SEE SHEET No. 3 FOR END MOUNTS
SEE SHEET No. 4 & 5 FOR TUBE MOUNT OPTIONS

SHEET No. 1 OF 5

VENTURE MFG. CO.

3636 DAYTON PARK DRIVE
DAYTON OHIO 45414
TEL.: (937)233-6832
FAX: (937)233-8485
WEB PAGE: www.venturemfgco.com

END MOUNT OPTIONS
SEE SHEET 3 FOR MORE
INFORMATION



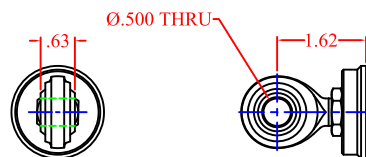
1200 ACME SCREW

ACTUATOR PERFORMANCE
AND SELECTION DATA
SEE SHEET No. 3 FOR END MOUNTS
SEE SHEET No. 4 & 5 FOR TUBE MOUNT OPTIONS

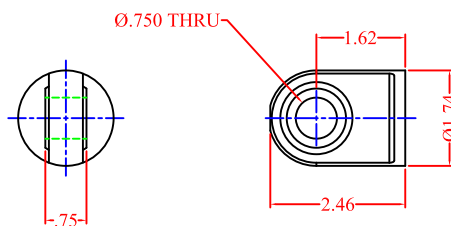
SHEET No. 2 OF 5

VENTURE MFG. CO.

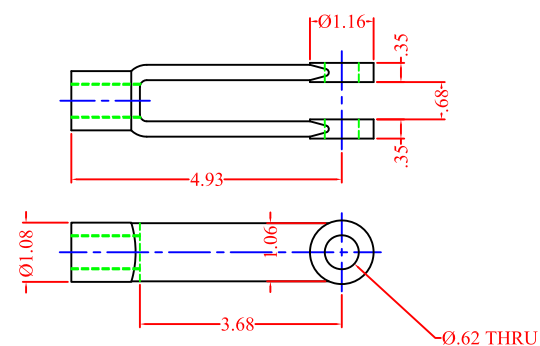
3636 DAYTON PARK DRIVE
DAYTON OHIO 45414
TEL.: (937)233-6832
FAX: (937)233-8485
WEB PAGE: www.venturemfgco.com



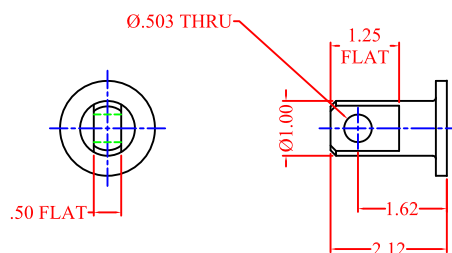
END MOUNT OPTION #1
1/2" SWIVEL END MOUNT
FOR 1/2" BOLT



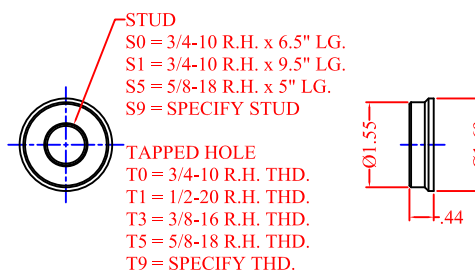
END MOUNT OPTION #3
3/4" SWIVEL END MOUNT
FOR 3/4" BOLT



END MOUNT OPTION #5
5/8 CLEVIS, USED WITH UNIVERSAL END
MOUNT & S5 OPTION



END MOUNT OPTION #2
1/2" FLAT END MOUNT
FOR 1/2" BOLT



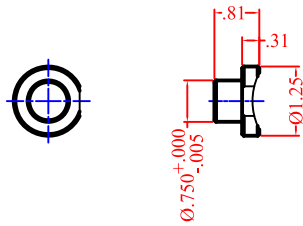
END MOUNT OPTION #4
UNIVERSAL END MOUNT
SPECIFY THREAD REQ'D.

1200 SERIES END MOUNT OPTIONS

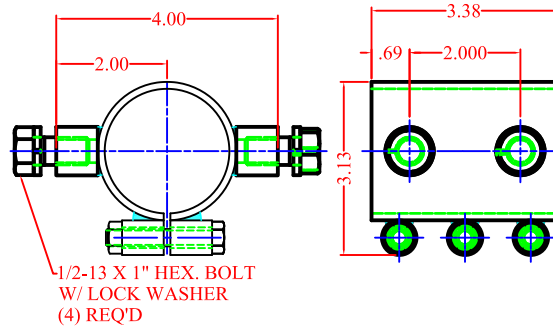
SHEET No. 3 OF 5

VENTURE MFG. CO.

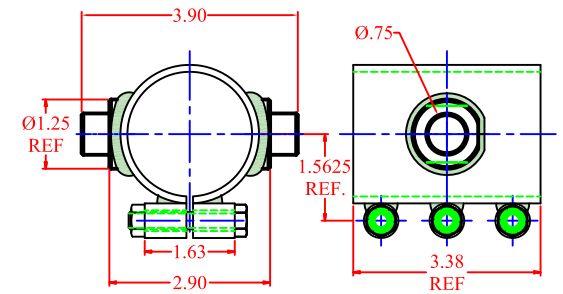
3636 DAYTON PARK DRIVE
 DAYTON OHIO 45414
 TEL.: (937)233-6832
 FAX: (937)233-8485
 WEB PAGE: www.venturemfgco.com



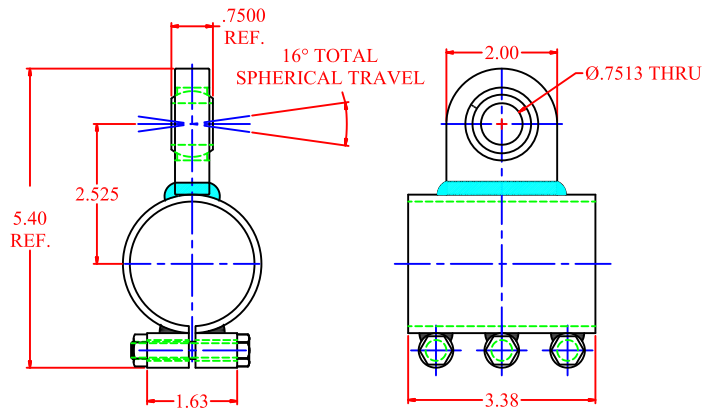
TUBE MOUNT OPTION #1
TRUNNIONS



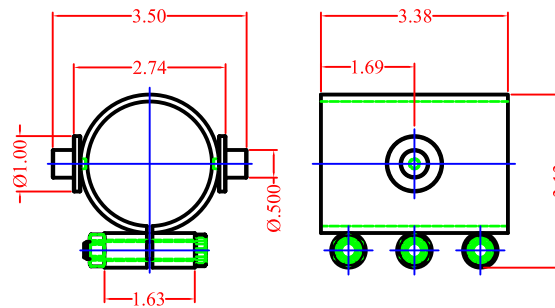
TUBE MOUNT OPTION #8
HEAVY DUTY INLINE CLAMP



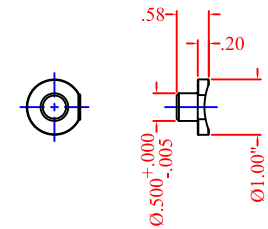
TUBE MOUNT OPTION #C
3/4\"/>



TUBE MOUNT OPTION #5
TRUNNIONS



TUBE MOUNT OPTION #A
1/2\"/>



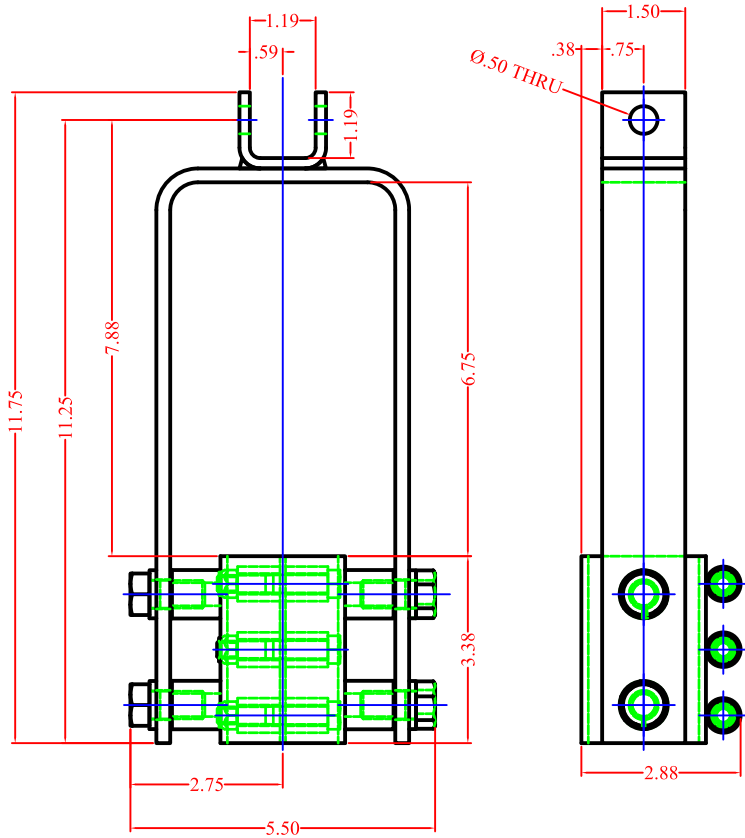
TUBE MOUNT OPTION #D
1/2\"/>

1200 SERIES TUBE MOUNTING OPTIONS

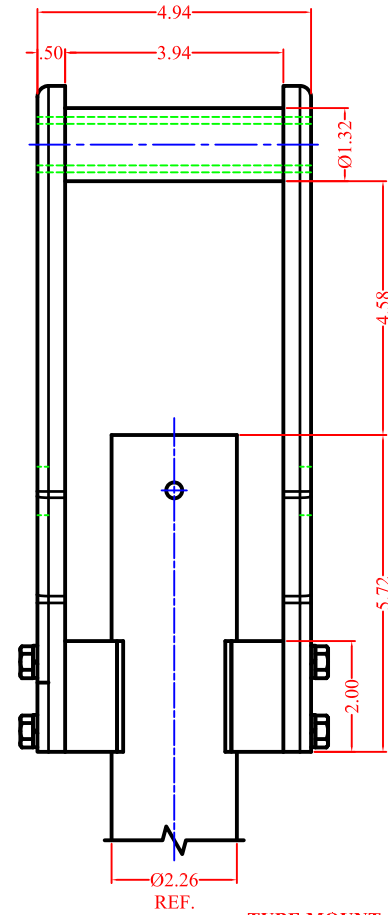
SHEET No. 4 OF 5

VENTURE MFG. CO.

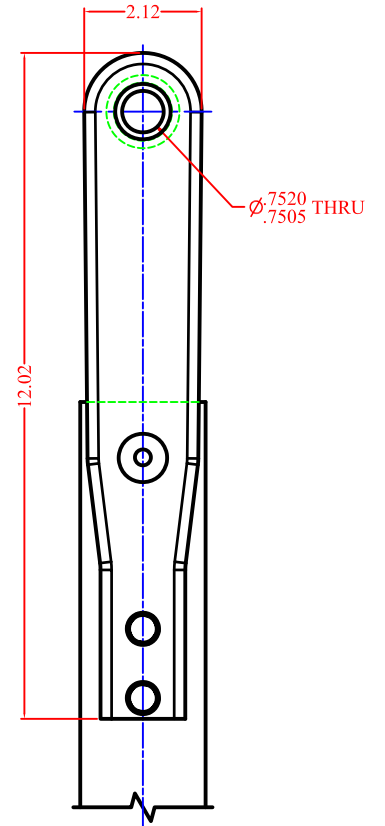
3636 DAYTON PARK DRIVE
DAYTON OHIO 45414
TEL.: (937)233-6832
FAX: (937)233-8485
WEB PAGE: www.venturemfgco.com



**TUBE MOUNT OPTION #2
HEAVY DUTY INLINE BRACKET**



**TUBE MOUNT OPTION #B
FIXED INLINE BRACKET**



1200 SERIES TUBE MOUNTING OPTIONS

SHEET No. 5 OF 5

VENTURE MFG. CO.

3636 DAYTON PARK DRIVE
DAYTON OHIO 45414
TEL.: (937)233-6832
FAX: (937)233-8485
WEB PAGE: www.venturemfgco.com