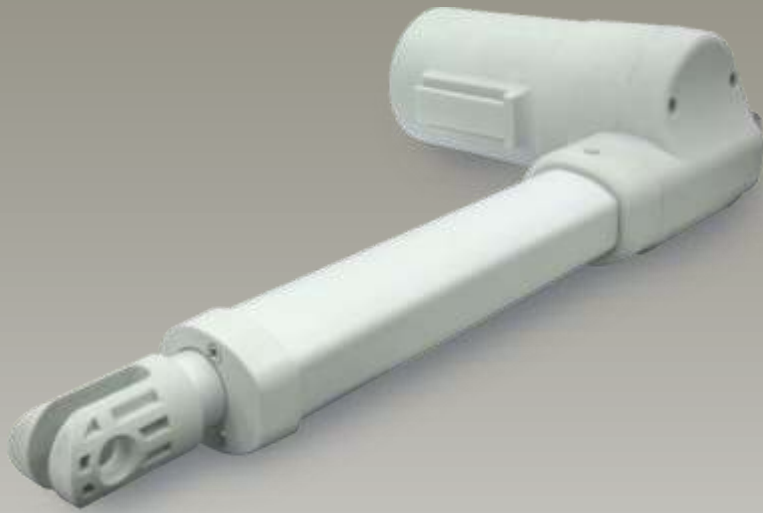


VMD66



Features

- ◆ The VMD66 is quiet and powerful actuator designed for use in home health care and medical beds and can be used with the VMD6C and VCB2P control boxes.
- ◆ Main applications : homecare, medical
- ◆ Input voltage : 24V DC / 12V DC
- ◆ Max. load : 6000N (push) / 4000N (pull)
- ◆ Max. current : 2.8A @ 24V DC
- ◆ Max.speed at no load : 16.6mm/sec
- ◆ Max.speed at full load : 12.2mm/sec @ 6000N
- ◆ Stroke : 50~300mm
- ◆ Duty cycle : 10% or 2 min continuous operation in 20 min.
- ◆ IP protection level : IPX5
- ◆ Color : RAL7035 or Black
- ◆ Certified : IEC60601-1 / EN60601-1
- ◆ Noise level : ≤ 50 dB
- ◆ Preset limit switches
- ◆ Orientation of rear connector is available in 30° increments.

Options

- ◆ Positioning signal feedback with Hall effect sensor X1
- ◆ Positioning signal feedback with Hall effect sensor X2
- ◆ Safety Nuts
- ◆ Push only

Compatibility

1. Control box

Without positioning feedback	VCB2P 、 VCB4P 、 VMD6C 、 VMD7C 、 VCBP2
Positioning signal feedback with Hall effect sensor x 1	VCB4P-HP-SY
Positioning signal feedback with Hall effect sensor x 2	VCB4P-SY-CG-BA

VMD6C & VCB2P can be easily fixed onto VMD66 actuator



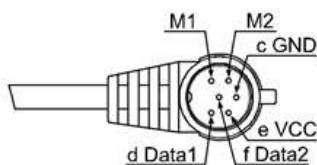
VMD66 shown with VMD6C



VMD66 shown with VCB2P

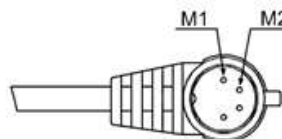
Pin Assignment

1x or 2x Hall sensors for positioning



M1(+) & M2(-) : Extends
Pin 'Data2' is defined for 2x Hall sensors only

No sensor feedback



M1(+) & M2(-) : Extends

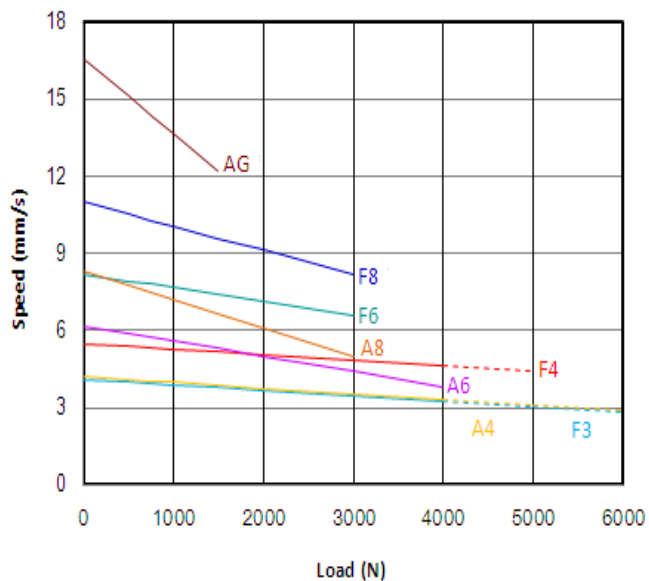
2. Accessory

None

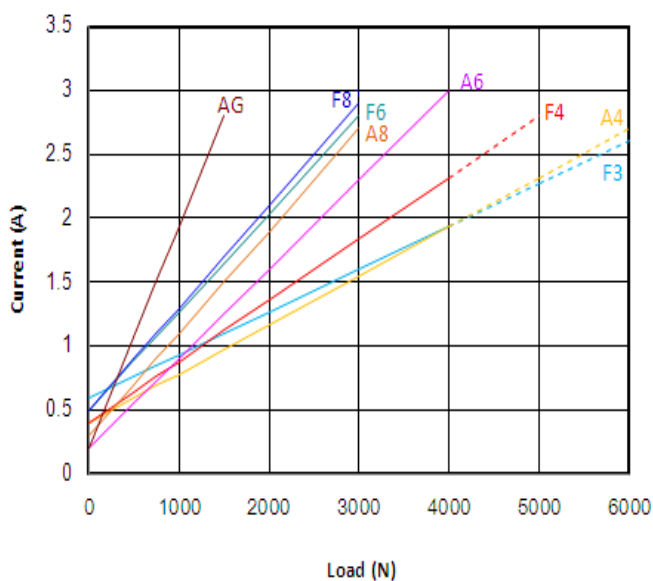
Performance Data

Model No.	Push Max. (N)	Pull Max. (N)	Speed (mm/s)		Current (A)			
			No load	Full load	No load		Full load	
					12V	24V	12V	24V
VMD66-XX-F3-XXX.XXX	6000	4000	4.1	2.8	1.2	0.6	5.2	2.6
VMD66-XX-A4-XXX.XXX	6000	4000	4.2	2.9	0.8	0.4	5.4	2.7
VMD66-XX-F4-XXX.XXX	5000	4000	5.5	4.4	0.8	0.4	5.6	2.8
VMD66-XX-A6-XXX.XXX	4000	4000	6.2	3.8	0.4	0.2	5.0	3.0
VMD66-XX-F6-XXX.XXX	3000	3000	8.2	6.6	1.0	0.5	5.6	2.8
VMD66-XX-A8-XXX.XXX	3000	3000	8.3	5.0	0.6	0.3	5.4	2.7
VMD66-XX-F8-XXX.XXX	3000	3000	11.0	8.2	1.0	0.5	5.8	2.9
VMD66-XX-AG-XXX.XXX	1500	1500	16.6	12.2	0.4	0.2	5.6	2.8

Speed vs. Load

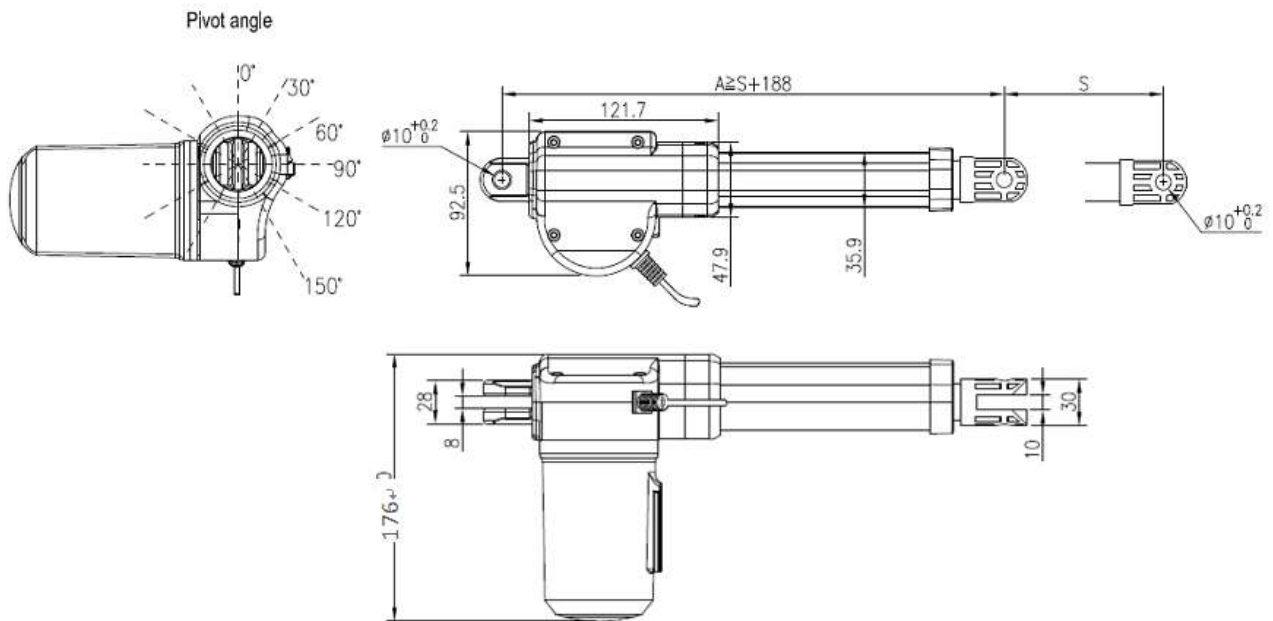


Current vs. Load

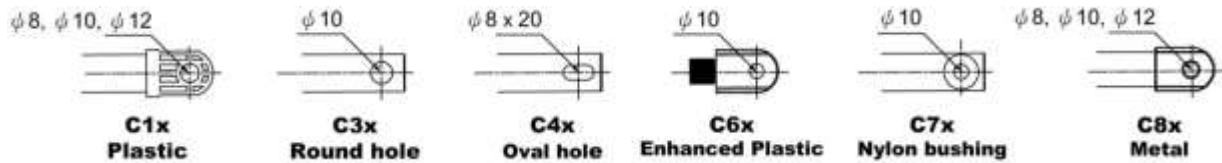


— Push / Pull Load
 - - - - - Push Load

Dimensions



◆ Front Connector



◆ Rear Connector



◆ Available stroke (S) range = 50~300mm

◆ Retracted length (A)

Front connector = C3x, C4x, C7x \geq stroke + 160mm

Front connector = C1x, C6x, C8x \geq stroke + 188mm

Safety Nut : additional 8mm is required

◆ Extended length (B) = S+A

Ordering Key

VMD66—□□—□□—□□□.□□□—C□□—□□□

Input Voltage

12 : 12V DC
24 : 24V DC

Motor and Spindle Code

A4、A6、A8、AG、F3、F4、F6、F8
(Refer to paragraph Performance Data)

Retracted Length

(Refer to paragraph Dimensions)

Extended Length

(=Retracted length + Stroke. Refer to paragraph Dimensions)

Front Connector

1 : Plastic	3 : Round hole
4 : Oval hole	6 : Enhanced plastic
7 : Nylon bushing	8 : Metal

Rear Connector

2 : Aluminum alloy

Options

HS3 : Hall sensor x 1
HS4 : Hall sensor x 2
PO : Push only
SN : Safety nut

Terms of Use

The user is responsible for determining the suitability of Venture products for specific applications. Due to continuous development in order to improve its products, Venture products are subject to frequent modifications and changes without prior notice. Venture reserves the right to discontinue the sale of any products displayed on its website or listed in its catalogue or other written materials drawn up by Venture Mfg. Co.