

COMMERCIAL ACTUATOR PRODUCTS

LITERAL/NUMERIC PART No. CODE SYSTEM

BCJ001

Rev: 16-Feb-09
prt dte: 2/16/09

EXAMPLE: ITEM NO. MA-834118332-18.00BK = MOTORIZED ACTUATOR WITH A BLACK GEARBOX, 36VDC 6800 RPM MOTOR, 58:1 RATIO, REED SWITCH, LIMIT SWITCHES, 800 SERIES 2" DIA. O.T., 3/4-8 L.H. ACME SCREW, STD CLAMP, 1/2" FLAT END MOUNT, 18.00" STROKE, Boot, Keyed



GEARBOX TYPE	
(0)	= NONE
(3)	= Raw Hsg w/o Strain Relief
(4)	= Raw Hsg w/Strain Relief
(5)	= Tan Hsg w/o Strain Relief
(6)	= Tan Hsg w/Strain Relief
(7)	= Blk Hsg w/o Strain Relief
(8)	= Blk Hsg w/Strain Relief
(9)	= SPECIAL (Specify)

UNIT TYPE	
(M)	= GEARBOX ONLY
(A)	= ACTUATOR TUBE ONLY
(MA)	= MOTORIZED ACTUATOR

SENSOR TYPE	
(0)	= NONE
(1)	= REED SWITCH ***
(2)	= HALL EFFECT ***
(3)	= POTENTIOMETER
(4)	= ENCODER ***
(9)	= SPECIAL (Specify)

SCREW DATA	
(0)	= NONE
(3)	= 3/4-8 L.H. ACME
(5)	= 5/8-5 R.H. BALL
(6)	= 3/4-5 R.H. BALL
(9)	= SPECIAL (Specify)

STANDARD MODIFIERS	
(OB)	= OPTIONAL BRAKE
(B)	= TUBE BOOT
(K)	= KEYED
(MB)	= Motor Boot
(M)	= MODIFIED
(P)	= PIGTAIL
(CE**)	Per Note

STROKE (in)

MA - 8 3 4 1 1 8 3 3 2 - 18.00 B M MB K CE P MB**

ELECTRIC MOTORS	
(0)	= NONE
(1)	= 12vdc 6800 RPM
(2)	= 24vdc 6800 RPM
(3)	= 36vdc 6800 RPM
(4)	= 90vdc 4200 RPM
(5)	= 120vdc* 4200 RPM
(7)	= STEPPER
(8)	= BRUSHLESS DC
(9)	= SPECIAL (Specify)
(A)	= 12vdc 2500 RPM
(B)	= 24vdc 2500 RPM
(C)	= 36vdc 2500 RPM
(D)	= 90vdc 2500 RPM
(E)	= 120vdc* 2500 RPM
(F)	= 12vdc 1200 RPM
(L)	= 12vdc 9000 RPM
(T)	= 18vdc 900 RPM

GEAR RATIO	
(0)	= NONE
(1)	= 18:1 GEAR DRIVE
(2)	= 28:1 GEAR DRIVE
(4)	= 58:1 GEAR DRIVE
(5)	= 360:1 WORM DRIVE ††
(6)	= 560:1 WORM DRIVE ††
(7)	= 1160:1 WORM DRIVE ††
(9)	= SPECIAL (Specify)

OUTER TUBE DIAMETER	
(0)	= NONE
(1)	= 2.25" 1200 Series
(8)	= 2.00" 800 SERIES
(9)	= SPECIAL (Specify)

TUBE MOUNTING	
(0)	= NONE
(1)	= TRUNNION
(2)	= HD INLINE BRACKET †
(3)	= STD CLAMP
(4)	= H.D. CLAMP
(5)	= HD Long CS CLAMP
(6)	= HD Long CLAMP
(7)	= Std INLINE BRACKET †
(8)	= HD INLINE Clamp
(9)	= SPECIAL (Specify)

END MOUNTS	
(0)	= NONE
(1)	= 1/2" SWIVEL
(2)	= 1/2" FLAT
(3)	= 3/4" SWIVEL
(4)	= Universal (specify thread)
(5)	= CLEVIS
(9)	= SPECIAL (Specify)

LIMITS	
(0)	= None (w/o CLT or LS)
(1)	= LIMIT SWITCHES
(2)	= CLUTCH
(3)	= BOTH
(4)	= Clutch w/ Manual Crank
(5)	= Both w/ Manual Crank
(6)	= Limits w/Manual Crank w/o CLT
(7)	= None w/Manual Crank
(9)	= SPECIAL (Specify)

NOTE: STD CLUTCH SETTINGS ARE: 125 in-lbs FOR 58:1 GEARBOXES
125 in-lbs FOR 28:1 GEARBOXES
75 in-lbs. FOR 18:1 GEARBOXES
CUSTOM CLUTCH SETTINGS ARE AVAILABLE

*120vdc MOTOR SUPPLIED WITH 10 amp RECTIFIER FOR USE IN 120vac CIRCUIT

** CE Certification available on 12v, 24v & 36v models only and comply with; Machinery Directive: EN60204-1: 2006 and EMC: EN55014-1: 2006, EN 61000-6-4: 2007

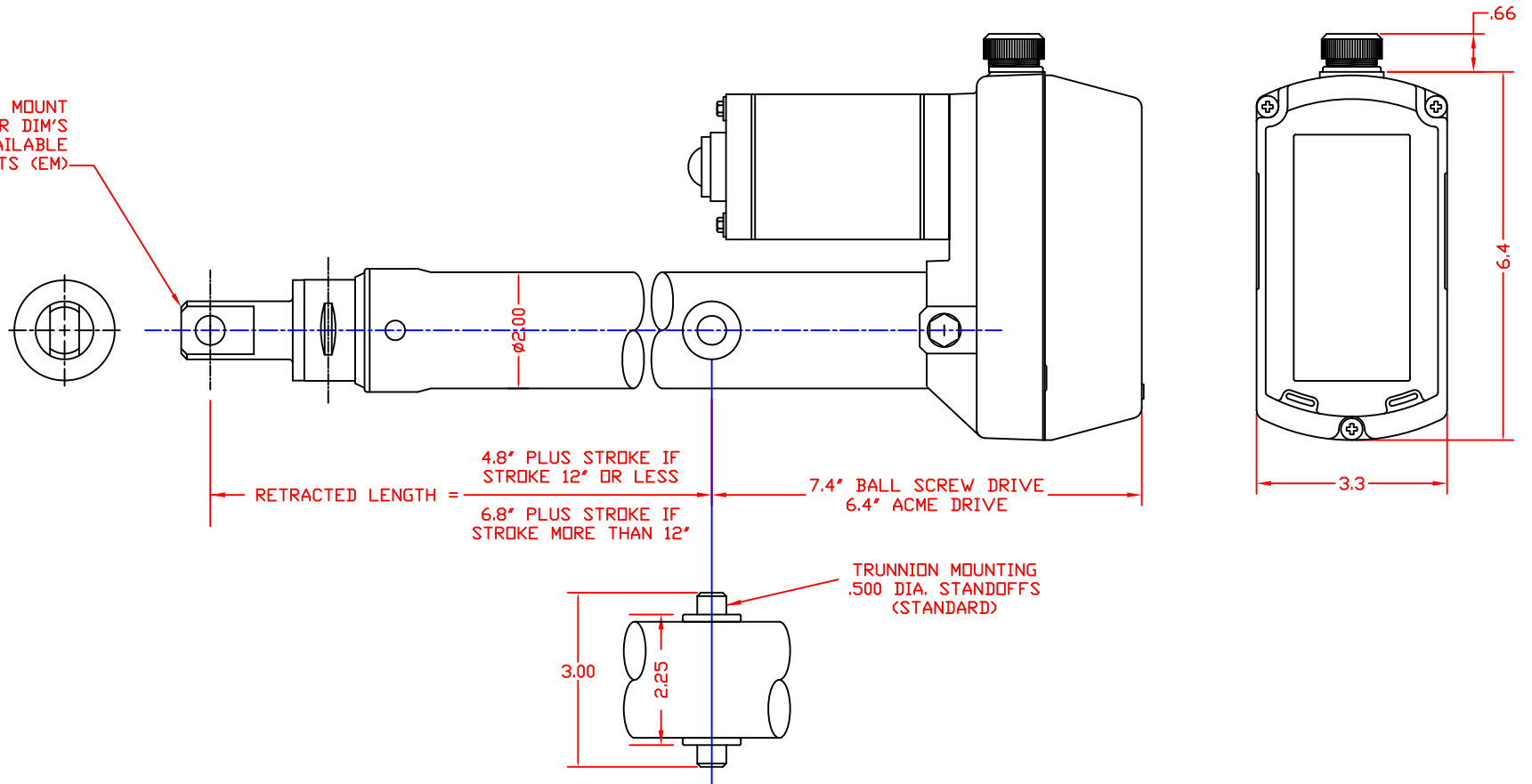
*** SPECIFY DESIRED PPR (Pulses Per Revolution) or PPI (Pulses Per Inch)

NOTE: STD U.O.S.
ACME SCREWS (A) ARE LEFT HAND (L.H.) PITCH
BALL SCREWS (B) ARE RIGHT HAND (R.H.) PITCH

†† These ratios are achieved by combining the 8500 gearbox with the 890 series 20:1 worm drive gearbox.

† Std INLINE BRACKET RATED FOR 750 LB LOAD
HD INLINE BRACKET RATED FOR 3000 LB LOAD

1/2" FLAT END MOUNT
SEE SHEET 2 FOR DIM'S
AND OTHER AVAILABLE
TUBE END MOUNTS (EM)



CUSTOM STROKES AVAILABLE UPON REQUEST

GBX RATIO	RATED LOAD lbs.	PERFORMANCE DATA (BALL SCREW)					PERFORMANCE DATA (ACME)					
		AMPERAGE DRAW @ RATED LOAD					RATED LOAD lbs.	AMPERAGE DRAW @ RATED LOAD				
		12 vdc	24 vdc	36 vdc	90 vdc	120 vac		12 vdc	24 vdc	36 vdc	90 vdc	120 vac
18:1	750	20	12	8	1.8	1.6	500	17	10	7.5	1.7	1.11
INCHES/SEC.		.9	.9	1.1	.7	.6	IPS	.6	.6	.7	.4	.4
28:1	1500	24	16	10	4	2	750	17	10	7.5	1.8	1.0
INCHES/SEC.		.6	.6	.8	.5	.4	IPS	.35	.35	.4	.25	.25
58:1	1500	12	8	5	1.6	.9	750	9	6	4.5	1.2	.8
INCHES/SEC.		.3	.3	.4	.25	.23	IPS	.2	.2	.25	.15	.15

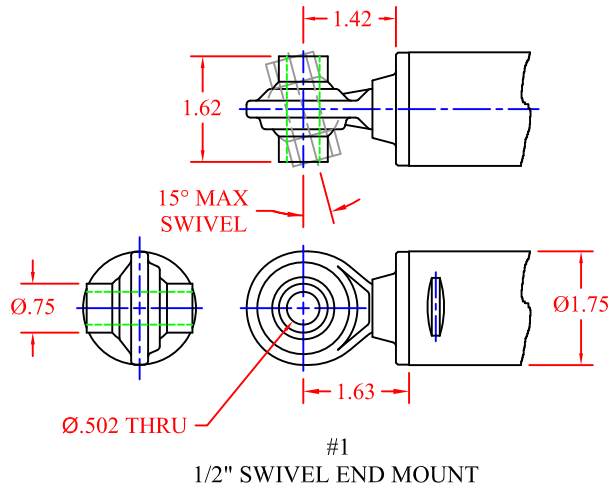
ACTUATOR PERFORMANCE AND SELECTION DATA

SEE SHEET NO. 2 FOR END MOUNT OPTIONS.
SEE SHEET NO. 3 & 4 FOR MOUNTING OPTIONS
SEE SHEET NO. 5 & 6 FOR TRUNNION & TRUNNION BRACKET DETAILS

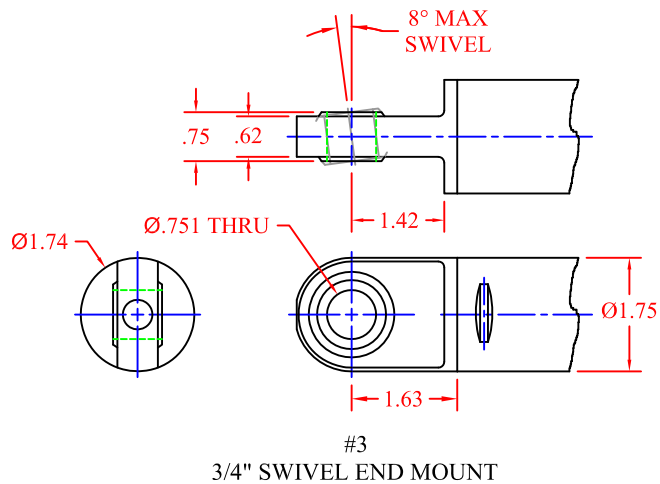
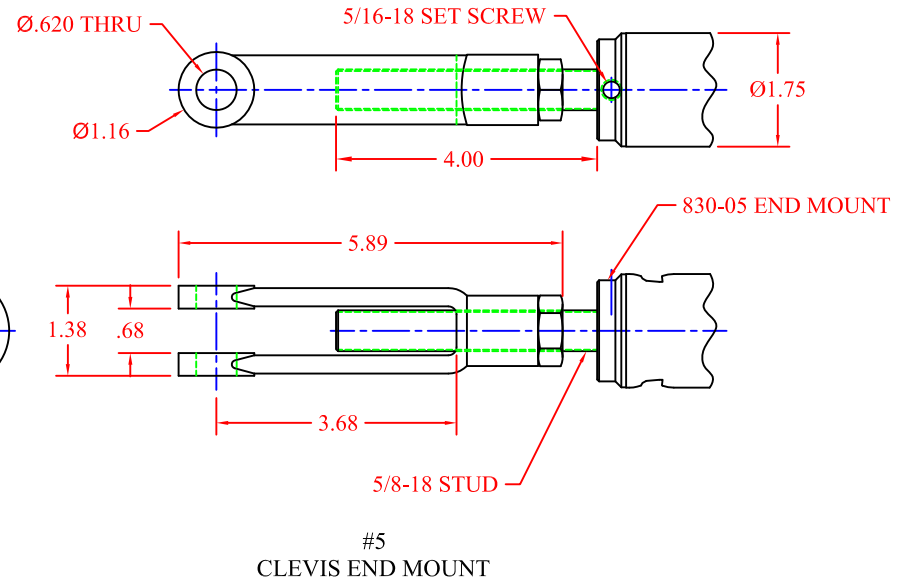
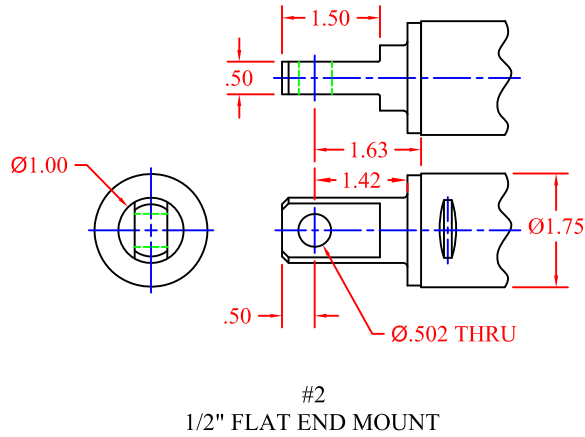
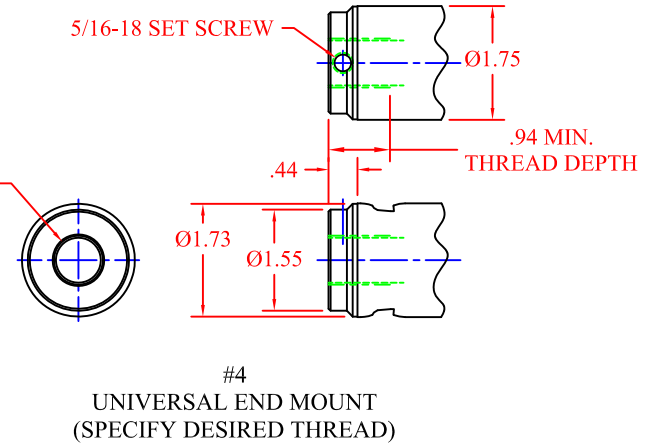
SEE BCJ001 FOR PART NO.

SHEET NO. 1

VENTURE MFG. CO.
3636 DAYTON PARK DRIVE
DAYTON OHIO 45414
TEL: (937)233-6832
FAX: (937)233-8485
WEB PAGE: www.venturemfgco.com



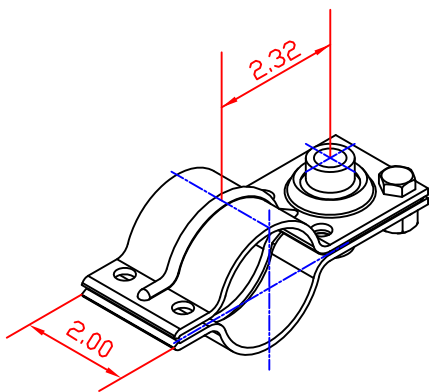
830-00, 3/4-10 UNC THREAD
 830-01, 1/2-20 UNF THREAD
 830-02 & -03, 3/8-16 UNC THREAD
 830-04, NO THREAD
 830-05, 5/8-18 UNF THREAD



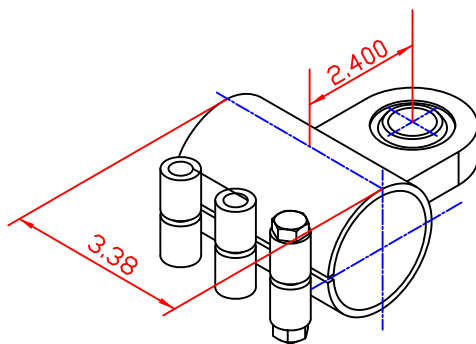
ACTUATOR TUBE END MOUNTING OPTIONS

VENTURE MFG. CO.

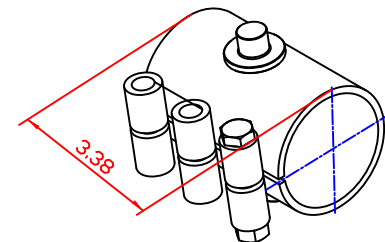
3636 DAYTON PARK DRIVE
 DAYTON OHIO 45414
 TEL.: (937)233-6832
 FAX: (937)233-8485
 WEB PAGE: www.venturemfgco.com



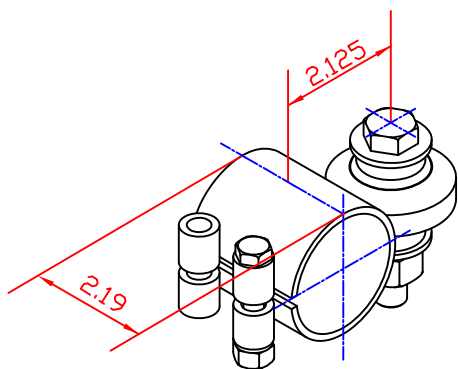
#3
STANDARD CLAMP
FOR 1/2" BOLT (818-20)



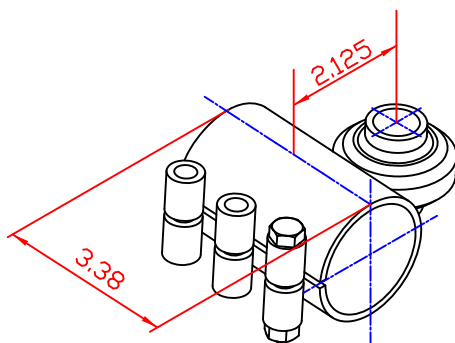
#5
HD LONG CS CLAMP
FOR 3/4" BOLT (818-51CS)



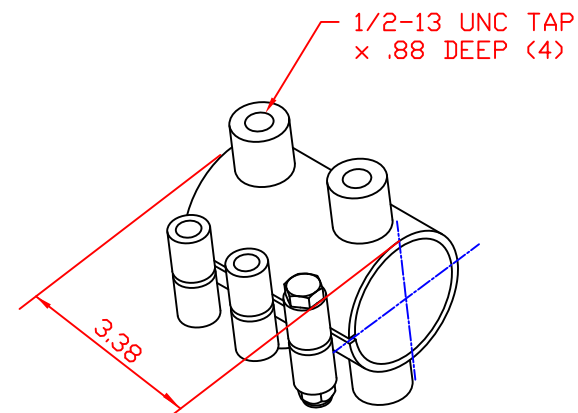
TRUNNION CLAMP
FOR 1/2" TRUNNIONS (818-55)



#4
HEAVY DUTY CLAMP
FOR 3/4" BOLT (818-50)



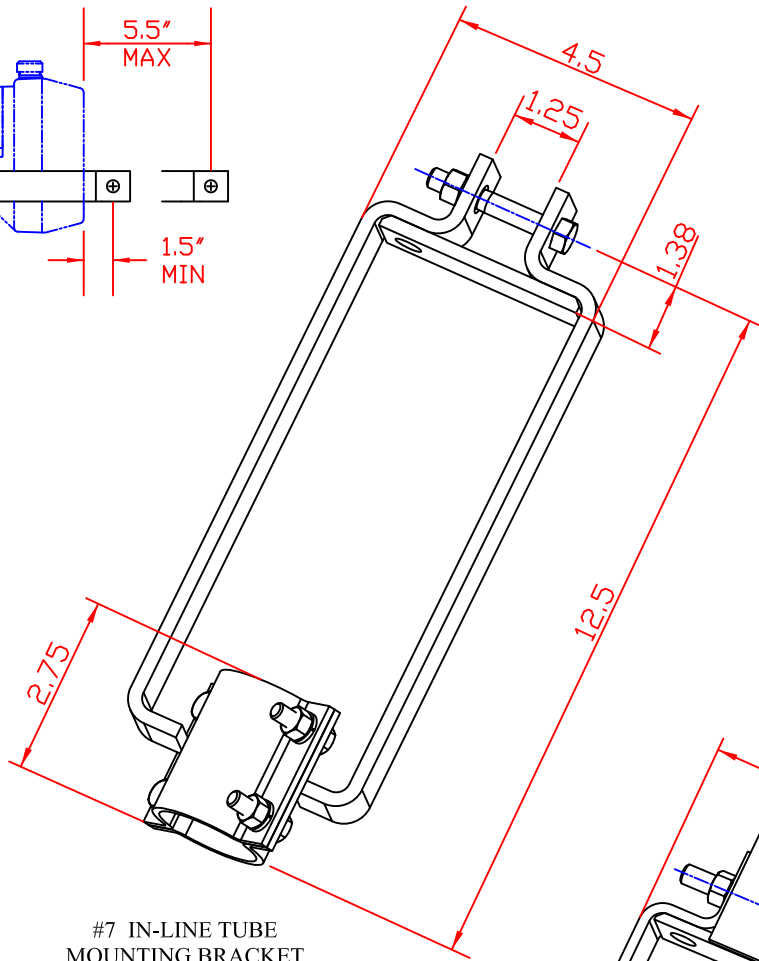
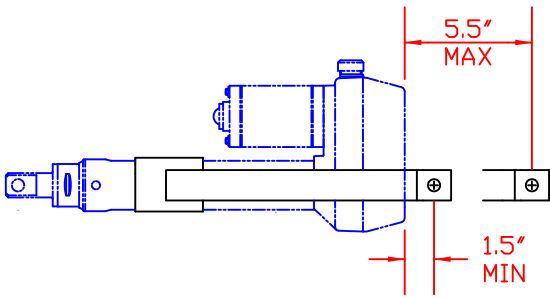
#6
HEAVY DUTY LONG CLAMP
FOR 3/4" BOLT (818-51)



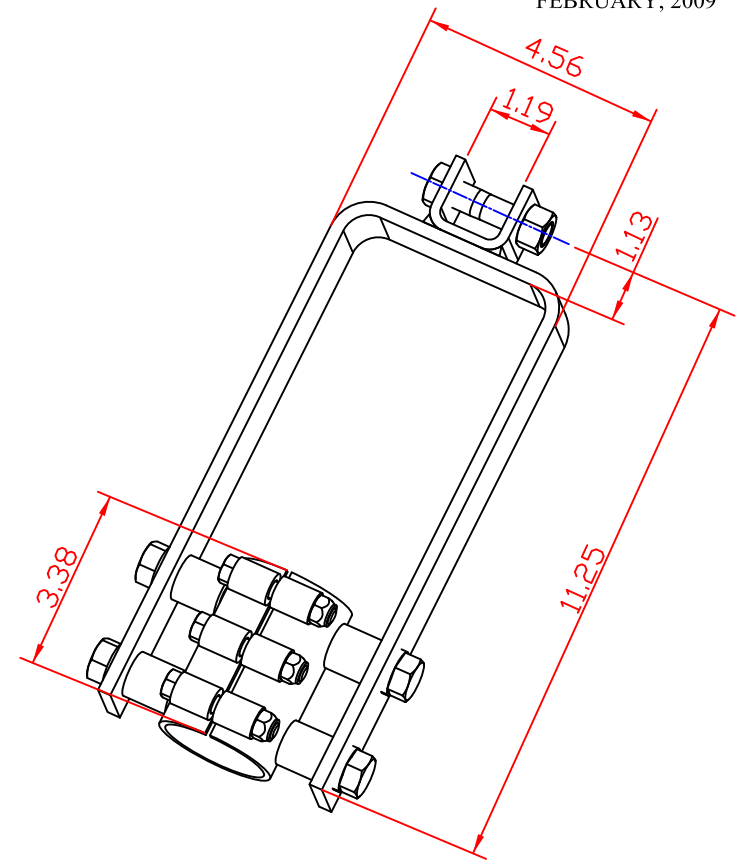
#8
HD IN-LINE CLAMP
FOR 1/2" BOLT (818-52)

2" DIA. TUBE MOUNTING OPTIONS

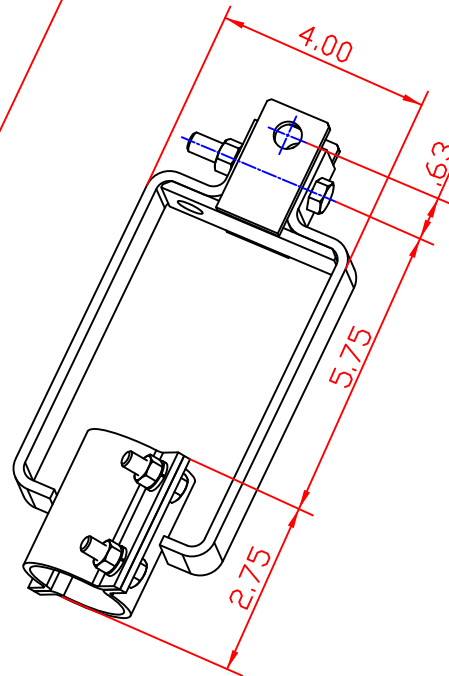
NOTE: EACH SUPPLIED WITH ALL MOUNTING HARDWARE



#7 IN-LINE TUBE
MOUNTING BRACKET
FOR 1/2" BOLT
844-50



#2 HEAVY DUTY IN-LINE
TUBE MOUNTING BRACKET
FOR 1/2" BOLT
844-52



UNIVERSAL IN-LINE TUBE
MOUNTING BRACKET
844-51

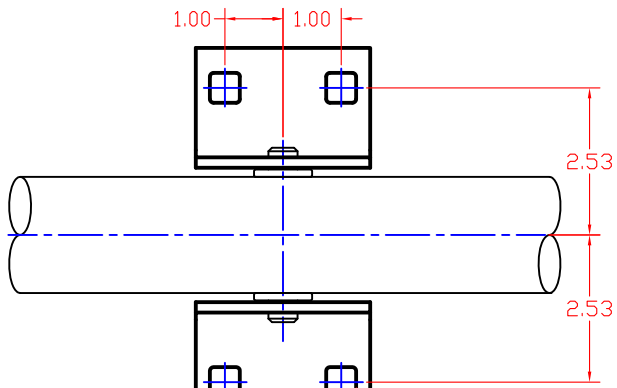
2" DIA. TUBE MOUNTING OPTIONS

NOTE: EACH SUPPLIED WITH ALL
MOUNTING HARDWARE

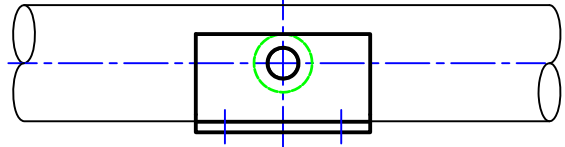
SHEET NO. 4

VENTURE MFG. CO.

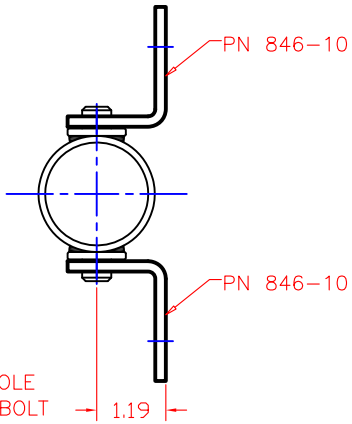
3636 DAYTON PARK DRIVE
DAYTON OHIO 45414
TEL: (937)233-6832
FAX: (937)233-8485
WEB PAGE: www.venturemfgco.com



STD. .515 SQUARE HOLE FOR 1/2" CARRIAGE BOLT



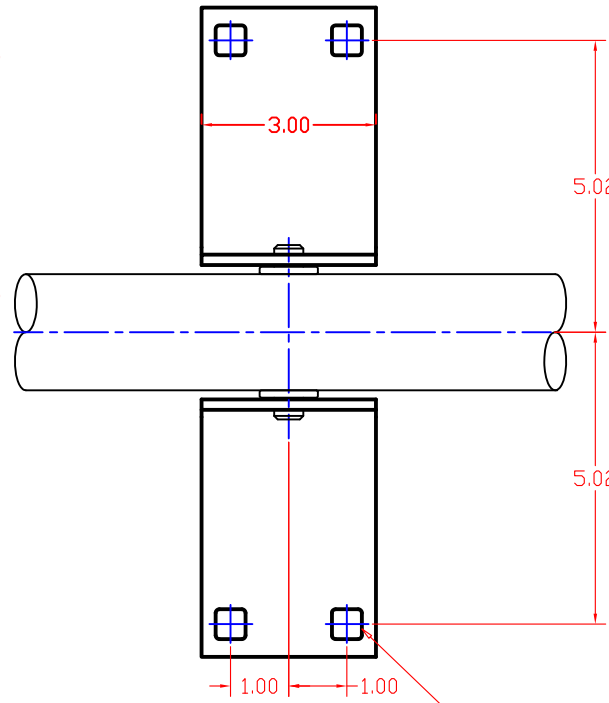
STANDARD MTG. OPTION ~ PN 846-20



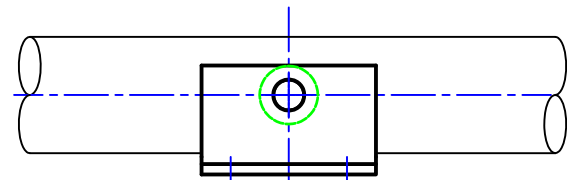
PN 846-10

PN 846-10

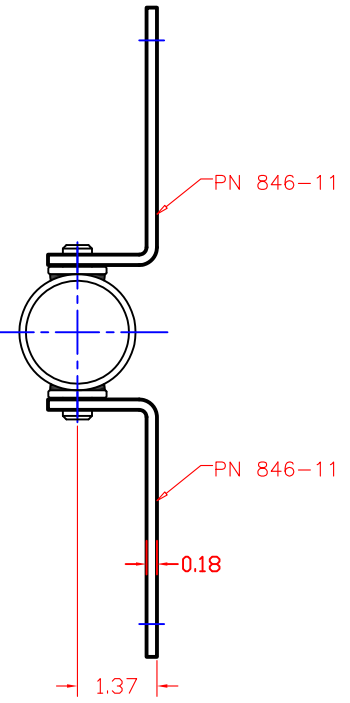
1.19



STD. .515 SQUARE HOLE FOR 1/2" CARRIAGE BOLT



EXTENDED MTG. OPTION ~ PN 846-21

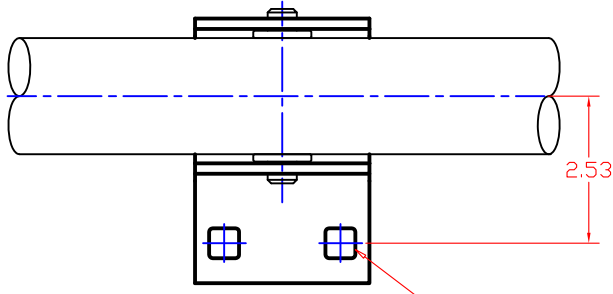


PN 846-11

PN 846-11

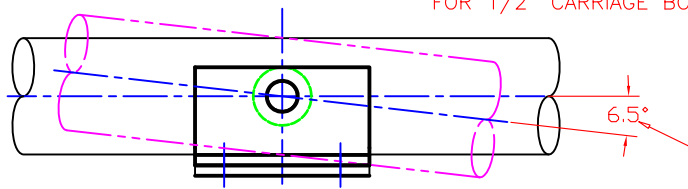
0.18

1.37



STD. .515 SQUARE HOLE FOR 1/2" CARRIAGE BOLT

PN 846-10



6.5°

TRAVEL IN EITHER DIRECTION

SIDE MTG. OPTION ~ PN 846-22

TRUNION MOUNTING OPTIONS

SHEET NO. 5

VENTURE MFG. CO.

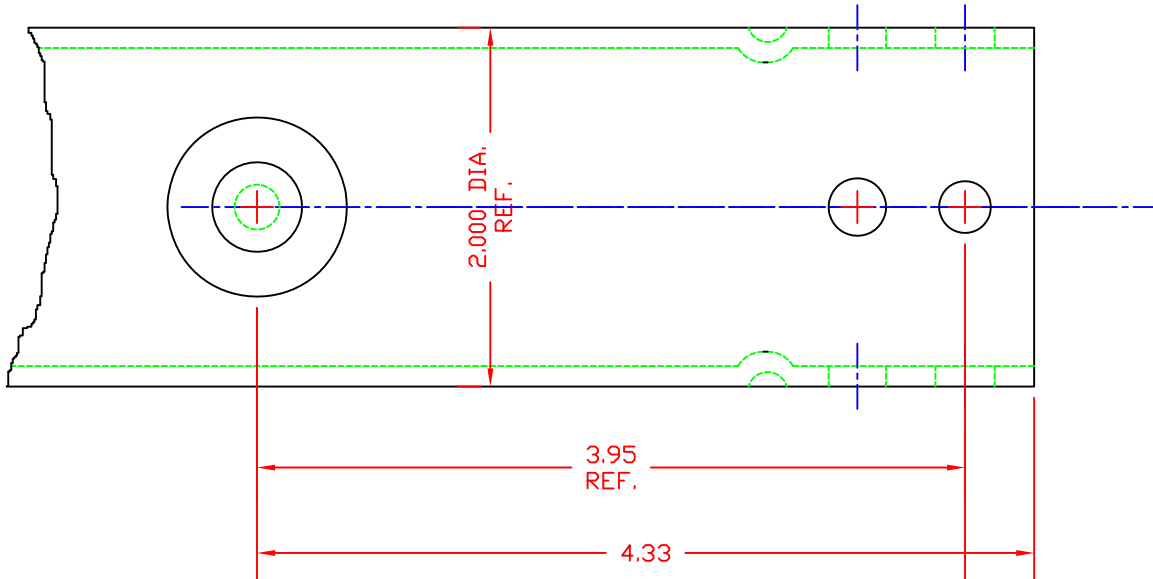
3636 DAYTON PARK DRIVE

DAYTON OHIO 45414

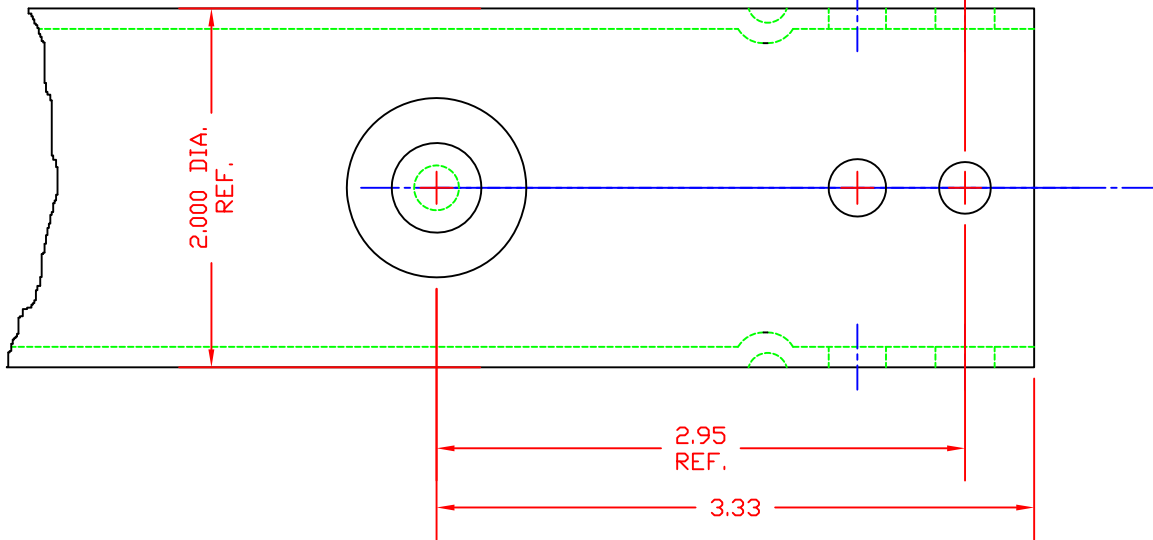
TEL: (937)233-6832

FAX: (937)233-8485

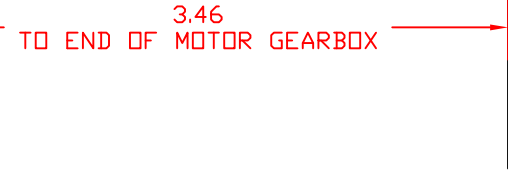
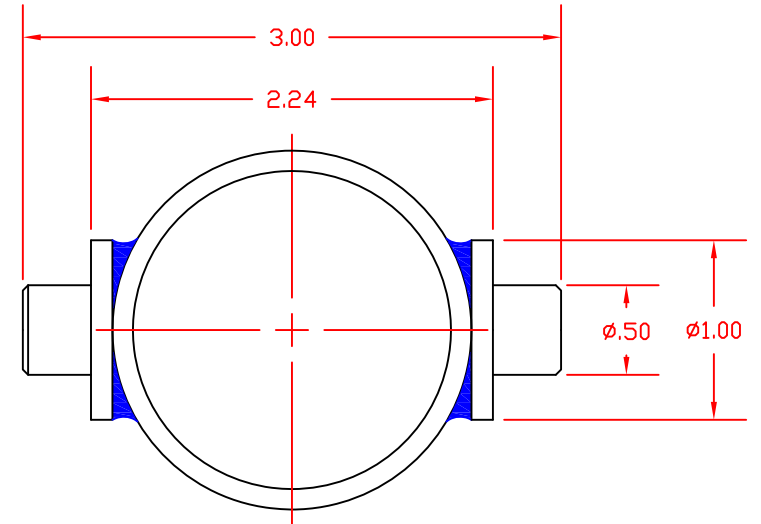
WEB PAGE: www.venturemfgco.com



TRUNNION MOUNTING – BALL SCREW



TRUNNION MOUNTING – ACME SCREW



TRUNNION MOUNTING

MA-800 SPECS SHEET #6

DATE MAY 1998	VENTURE MFG. CO.		
SCALE FULL	A-800T		