

COMMERCIAL ACTUATOR PRODUCTS

LITERAL/NUMERIC PART No. CODE SYSTEM

EXAMPLE: ITEM NO. MA-834118332-18.00BK = MOTORIZED ACTUATOR WITH A BLACK GEARBOX, 36VDC 6800 RPM MOTOR, 58:1 RATIO, REED SWITCH, LIMIT SWITCHES, 800 SERIES 2" DIA. O.T., 3/4-8 L.H. ACME SCREW, STD CLAMP, 1/2" FLAT END MOUNT, 18.00" STROKE, Boot, Keyed



| GEARBOX TYPE | |
|--------------|------------------------------|
| (0) | = NONE |
| (1) | = Hsg for 1200 Series Tube |
| (2) | = 8600 Gearbox |
| (3) | = Raw Hsg w/o Strain Relief |
| (4) | = Raw Hsg w/Strain Relief |
| (5) | = Tan Hsg w/o Strain Relief |
| (6) | = Tan Hsg w/Strain Relief |
| (7) | = Blk Hsg w/o Strain Relief |
| (8) | = Blk Hsg w/Strain Relief |
| (9) | = SPECIAL (Specify) |
| (A) | = Nema 23 & 1200 Series Tube |

| UNIT TYPE | |
|-----------|----------------------|
| (M) | = Motor Gearbox Only |
| (A) | = Actuator Tube Only |
| (MA) | = Motorized Actuator |

| SENSOR TYPE | |
|-------------|---------------------|
| (0) | = NONE |
| (1) | = REED SWITCH *** |
| (2) | = HALL EFFECT *** |
| (3) | = POTENTIOMETER |
| (4) | = ENCODER *** |
| (9) | = SPECIAL (Specify) |

| SCREW DATA | |
|------------|------------------------------|
| (0) | = NONE |
| (1) | = 1-8 L.H. ACME |
| (2) | = 1-10 L.H. ACME |
| (3) | = 3/4-8 L.H. ACME |
| (4) | = 3/4-10 L.H. ACME |
| (5) | = 5/8-5 R.H. BALL |
| (6) | = 3/4-5 R.H. BALL SN 2500lb |
| (7) | = 3/4-5 R.H. BALL DN 4000lb |
| (8) | = 1-4 R.H. BALL SN (Special) |
| (9) | = SPECIAL (Specify) |

| STANDARD MODIFIERS | |
|--------------------|--------------------|
| (W) | = TUBE WIPER/SEAL |
| (HD) | = HD Insert Tube ^ |
| (EB) | = ELECTRIC BRAKE |
| (B) | = TUBE BOOT |
| (K) | = KEYED |
| (MB) | = Motor Boot |
| (M) | = MODIFIED |
| (P) | = PIGTAIL |
| (CE**) | = Per Note |

MA - 8 3 4 1 1 8 3 3 2 - 18 HD B M MB K CE P EB**

| ELECTRIC MOTORS | |
|-----------------|-----------------------|
| (0) | = NONE |
| (1) | = 12vdc 6800 RPM |
| (2) | = 24vdc 6800 RPM |
| (3) | = 36vdc 6800 RPM |
| (4) | = 90vdc 4200 RPM |
| (5) | = 120vdc* 4200 RPM |
| (6) | = 48vdc 6800 RPM |
| (7) | = STEPPER |
| (8) | = 24vdc 4000rpm BLDC |
| (9) | = SPECIAL (Specify) |
| (A) | = 12vdc 2500 RPM |
| (B) | = 24vdc 2500 RPM |
| (C) | = 36vdc 2500 RPM |
| (D) | = 90vdc 2500 RPM |
| (E) | = 120vdc* 2500 RPM |
| (F) | = 12vdc 1200 RPM |
| (G) | = 48vdc 2500 RPM |
| (H) | = 36vdc 4000 RPM BLDC |
| (L) | = 12vdc 9000 RPM |
| (T) | = 18vdc 900 RPM |

| GEAR RATIO | |
|------------|------------------------|
| (0) | = NONE |
| (1) | = 18:1 GEAR DRIVE |
| (2) | = 28:1 GEAR DRIVE |
| (4) | = 58:1 GEAR DRIVE |
| (5) | = 360:1 WORM DRIVE †† |
| (6) | = 560:1 WORM DRIVE †† |
| (7) | = 1160:1 WORM DRIVE †† |
| (9) | = SPECIAL (Specify) |
| (A) | = 1:1 Direct Drive |
| (B) | = 2:1 Belt Drive |
| (C) | = 4:1 Belt Drive |
| (D) | = 19:1 Belt Drive |

| OUTER TUBE DIAMETER | |
|---------------------|---------------------|
| (0) | = NONE |
| (1) | = 2.25" 1200 Series |
| (8) | = 2.00" 800 SERIES |
| (9) | = SPECIAL (Specify) |

| LIMITS | |
|--------|-----------------------------------|
| (0) | = None (w/o CLT or LS) |
| (1) | = LIMIT SWITCHES |
| (2) | = CLUTCH |
| (3) | = BOTH |
| (4) | = Clutch w/ Manual Crank |
| (5) | = Both w/ Manual Crank |
| (6) | = Limits w/Manual Crank w/o CLT |
| (7) | = None w/Manual Crank |
| (8) | = Control Limits w/CLT |
| (9) | = SPECIAL (Specify) |
| (A) | = Control Limits w/o CLT |
| (B) | = Control Limits w/CLT w/Limits |
| (C) | = Control Limits w/o CLT w/Limits |
| (D) | = Cntrl Limits w/CLT w/Man Crnk |
| (E) | = Cntrl Lmts w/o CLT w/Man Crnk |

| TUBE MOUNTING | |
|---------------|------------------------|
| (0) | = NONE |
| (1) | = TRUNNION |
| (2) | = HD INLINE BRACKET ‡ |
| (3) | = STD CLAMP |
| (4) | = H.D. CLAMP |
| (5) | = HD Long CS CLAMP |
| (6) | = HD Long CLAMP |
| (7) | = Std INLINE BRACKET ‡ |
| (8) | = HD INLINE Clamp |
| (9) | = SPECIAL (Specify) |
| (A) | = 1/2" Trunnion Clamp |

| END MOUNTS | |
|------------|------------------------------|
| (0) | = NONE |
| (1) | = 1/2" SWIVEL |
| (2) | = 1/2" FLAT |
| (3) | = 3/4" SWIVEL |
| (4) | = Universal (specify thread) |
| (5) | = 5/8" CLEVIS |
| (9) | = SPECIAL (Specify) |

| (4) Thread Specifications | |
|---------------------------|---------------------|
| (S) | = Stud |
| (S0) | = 3/4-10 RH x 6.5" |
| (S1) | = 3/4-10 RH x 9.5" |
| (S5) | = 5/8-18 RH x 5" |
| (S9) | = SPECIAL (Specify) |
| (T) | = Tapped Hole |
| (T0) | = 3/4-10 RH |
| (T1) | = 1/2-20 RH |
| (T3) | = 3/8-16 RH |
| (T5) | = 5/8-18 RH |
| (T9) | = SPECIAL (Specify) |

*120vdc MOTOR SUPPLIED WITH 10 amp RECTIFIER FOR USE IN 120vac CIRCUIT

‡ Std INLINE BRACKET RATED FOR 750 LB LOAD
 ‡ HD INLINE BRACKET RATED FOR 3000 LB LOAD

** CE Certification available on 12v, 24v & 36v models only and comply with;
 Machinery Directive: EN60204-1: 2006 and EMC: EN55014-1: 2006, EN 61000-6-4: 2007

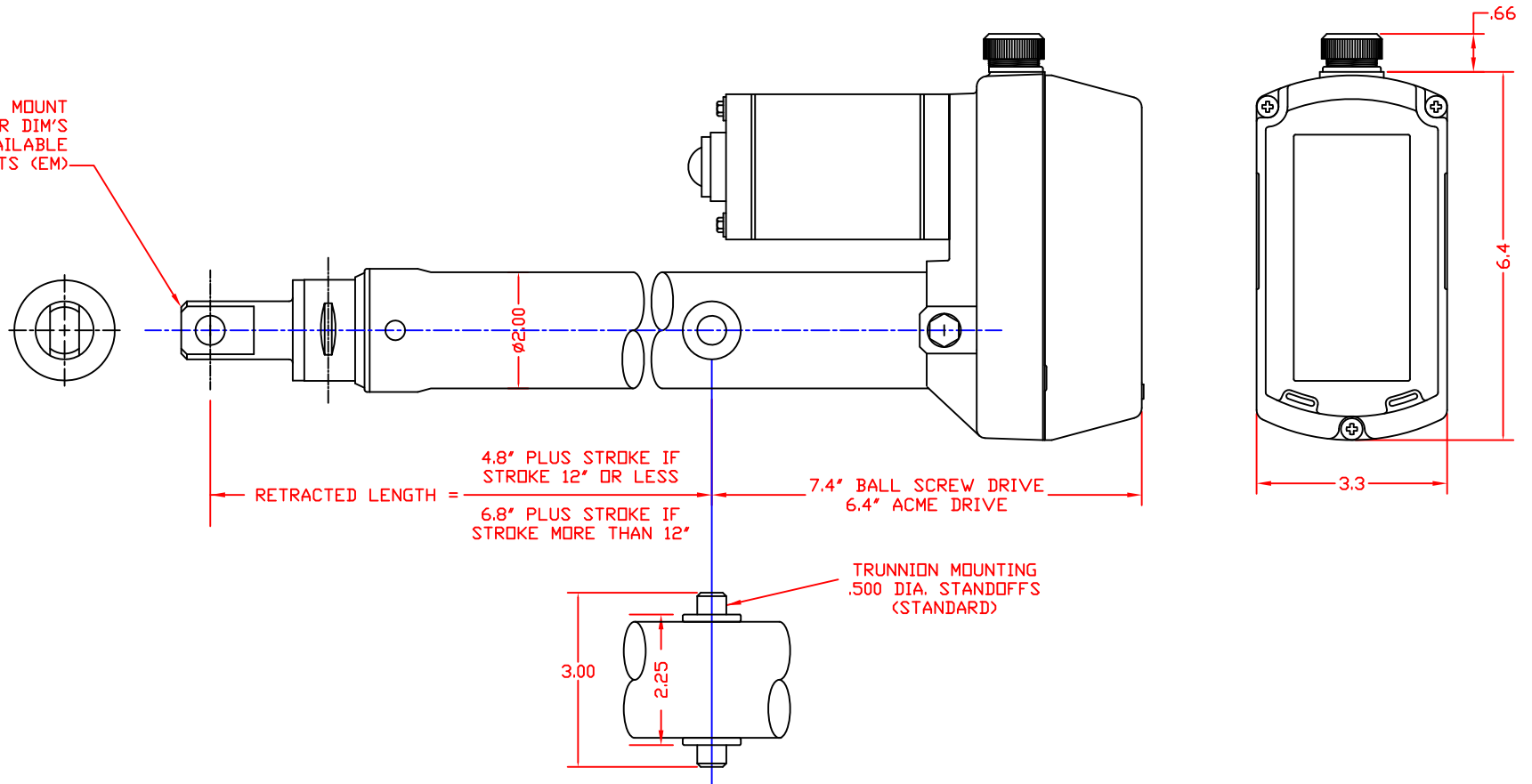
*** SPECIFY DESIRED PPR (Pulses Per Revolution) or PPI (Pulses Per Inch)

†† These ratios are achieved by combining the 8500 gearbox with the 890 series 20:1 worm drive gearbox. Limit switches are not available on these units.

^ HD Used with 800 or 1200 series tubes to increase compression load capacity when needed

NOTE: STD U.O.S.
 ACME SCREWS (A) ARE LEFT HAND (L.H.) PITCH
 BALL SCREWS (B) ARE RIGHT HAND (R.H.) PITCH

1/2" FLAT END MOUNT
SEE SHEET 2 FOR DIM'S
AND OTHER AVAILABLE
TUBE END MOUNTS (EM)



CUSTOM STROKES AVAILABLE UPON REQUEST

| GBX RATIO | RATED LOAD lbs. | PERFORMANCE DATA (BALL SCREW) | | | | | PERFORMANCE DATA (ACME) | | | | | |
|-------------|-----------------|-------------------------------|--------|--------|--------|---------|-------------------------|----------------------------|--------|--------|--------|---------|
| | | AMPERAGE DRAW @ RATED LOAD | | | | | RATED LOAD lbs. | AMPERAGE DRAW @ RATED LOAD | | | | |
| | | 12 vdc | 24 vdc | 36 vdc | 90 vdc | 120 vac | | 12 vdc | 24 vdc | 36 vdc | 90 vdc | 120 vac |
| 18:1 | 750 | 20 | 12 | 8 | 1.8 | 1.6 | 500 | 17 | 10 | 7.5 | 1.7 | 1.11 |
| INCHES/SEC. | | .9 | .9 | 1.1 | .7 | .6 | IPS | .6 | .6 | .7 | .4 | .4 |
| 28:1 | 1500 | 24 | 16 | 10 | 4 | 2 | 750 | 17 | 10 | 7.5 | 1.8 | 1.0 |
| INCHES/SEC. | | .6 | .6 | .8 | .5 | .4 | IPS | .35 | .35 | .4 | .25 | .25 |
| 58:1 | 1500 | 12 | 8 | 5 | 1.6 | .9 | 750 | 9 | 6 | 4.5 | 1.2 | .8 |
| INCHES/SEC. | | .3 | .3 | .4 | .25 | .23 | IPS | .2 | .2 | .25 | .15 | .15 |

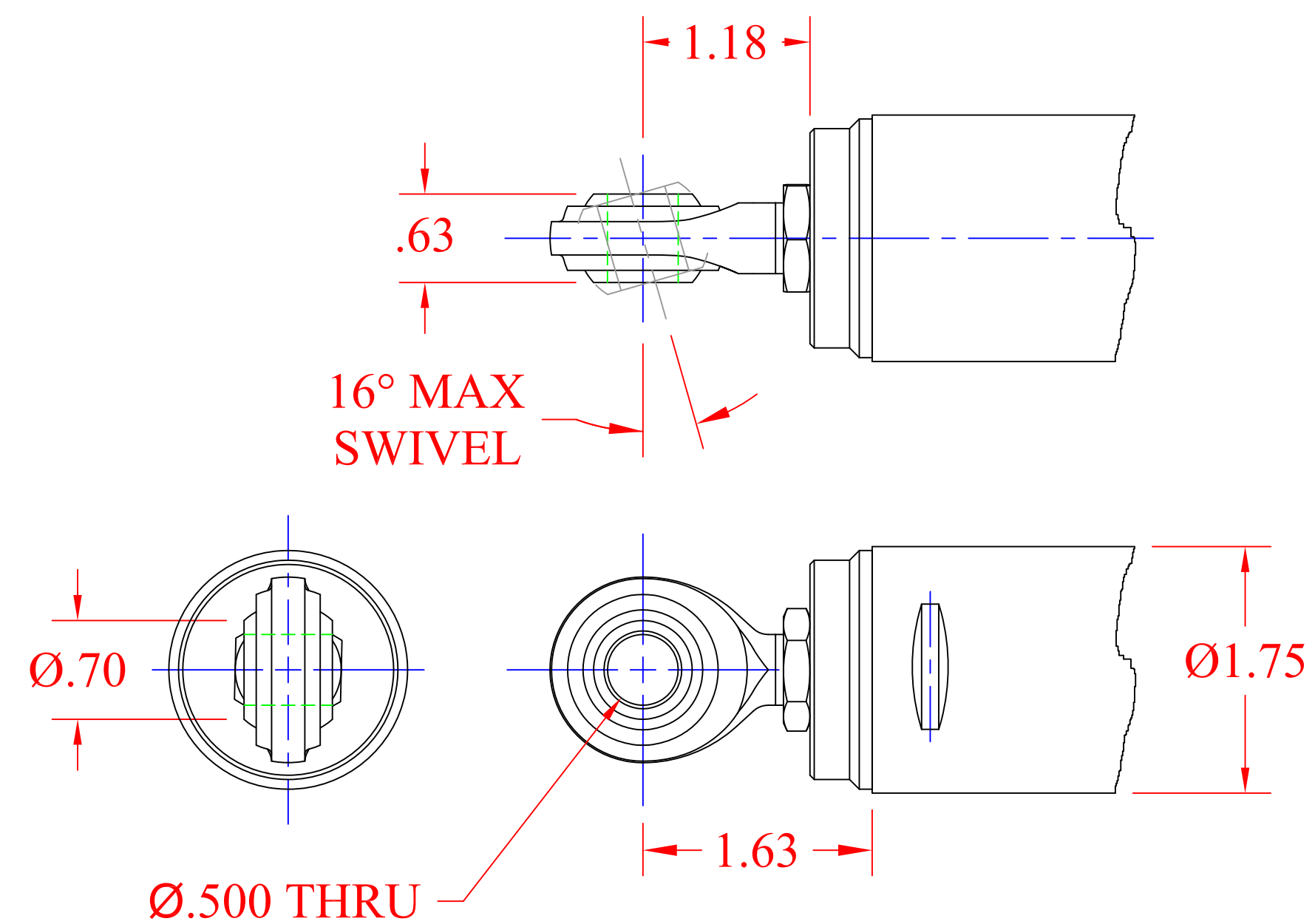
ACTUATOR PERFORMANCE AND SELECTION DATA

SEE SHEET NO. 2 FOR END MOUNT OPTIONS.
SEE SHEET NO. 3 & 4 FOR MOUNTING OPTIONS
SEE SHEET NO. 5 & 6 FOR TRUNNION & TRUNNION BRACKET DETAILS

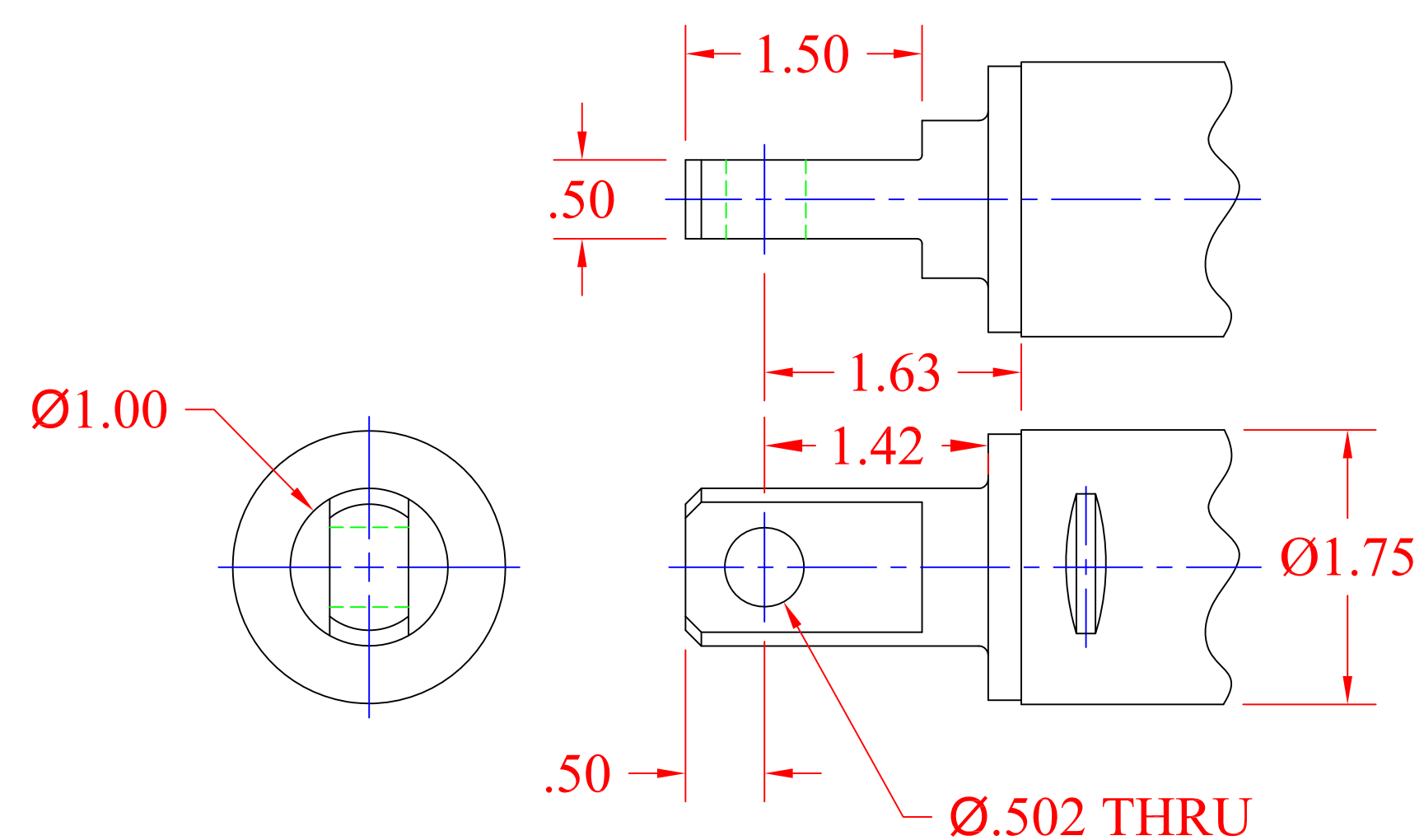
SEE BCJ001 FOR PART NO.

SHEET NO. 1

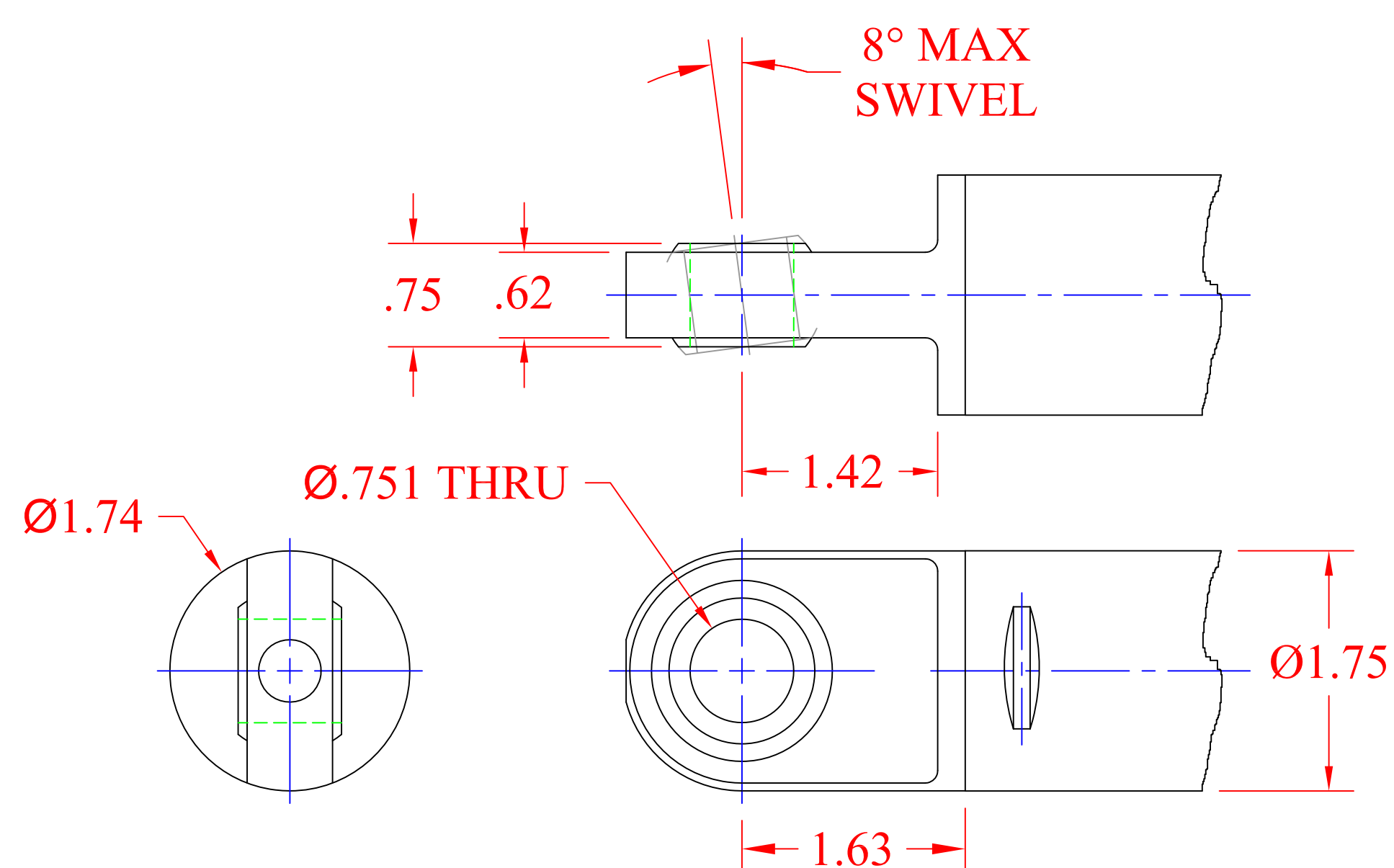
VENTURE MFG. CO.
3636 DAYTON PARK DRIVE
DAYTON OHIO 45414
TEL: (937)233-6832
FAX: (937)233-8485
WEB PAGE: www.venturemfgco.com



#1
1/2" SWIVEL END MOUNT



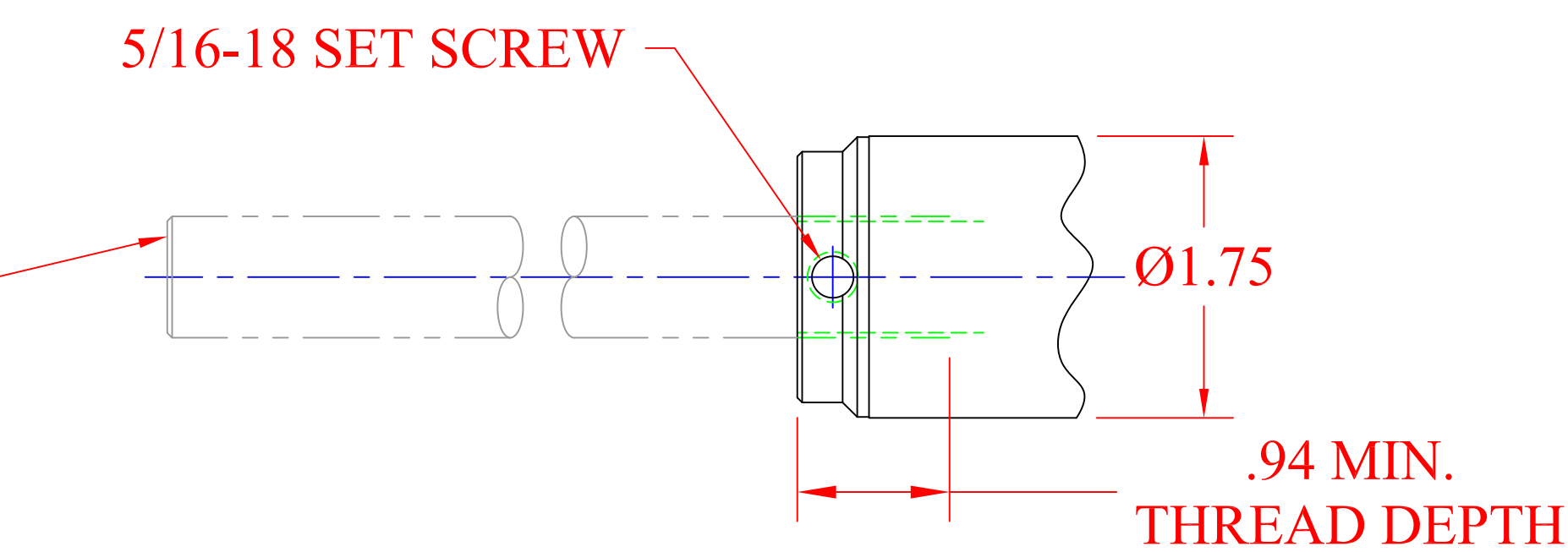
#2
1/2" FLAT END MOUNT



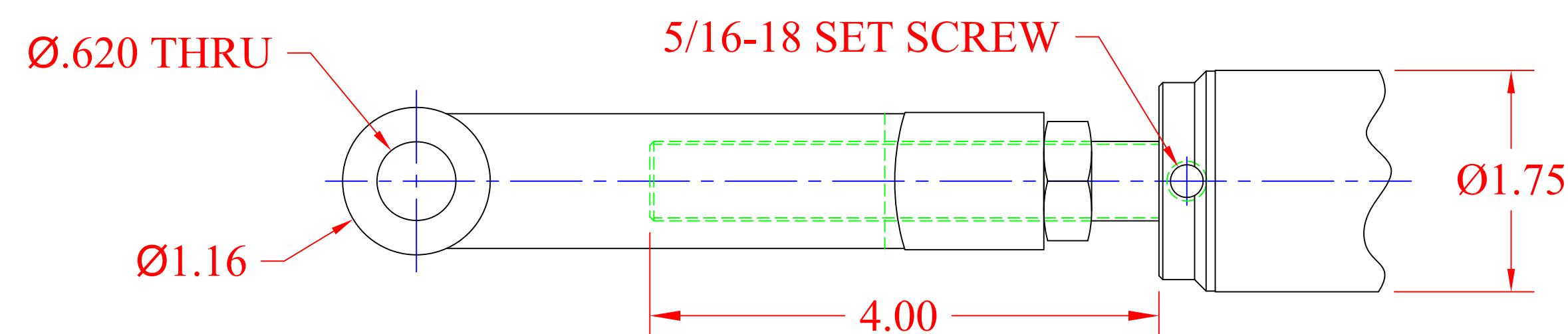
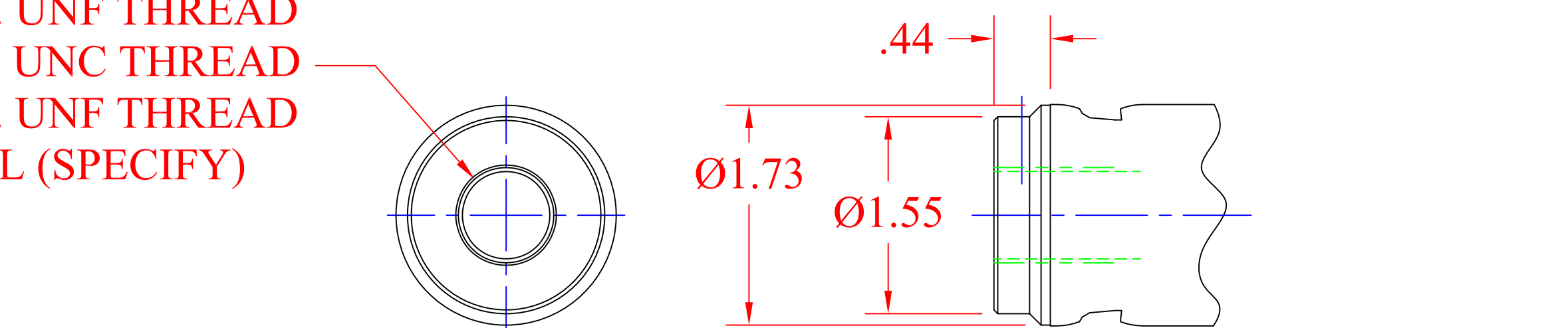
#3
3/4" SWIVEL END MOUNT

- S0 ~ 3/4-10 R.H. x 6.5" STUD
- S1 ~ 3/4-10 R.H. x 9.5" STUD
- S5 ~ 5/8-18 R.H. x 5.0" STUD
- S9 ~ SPECIAL (SPECIFY)

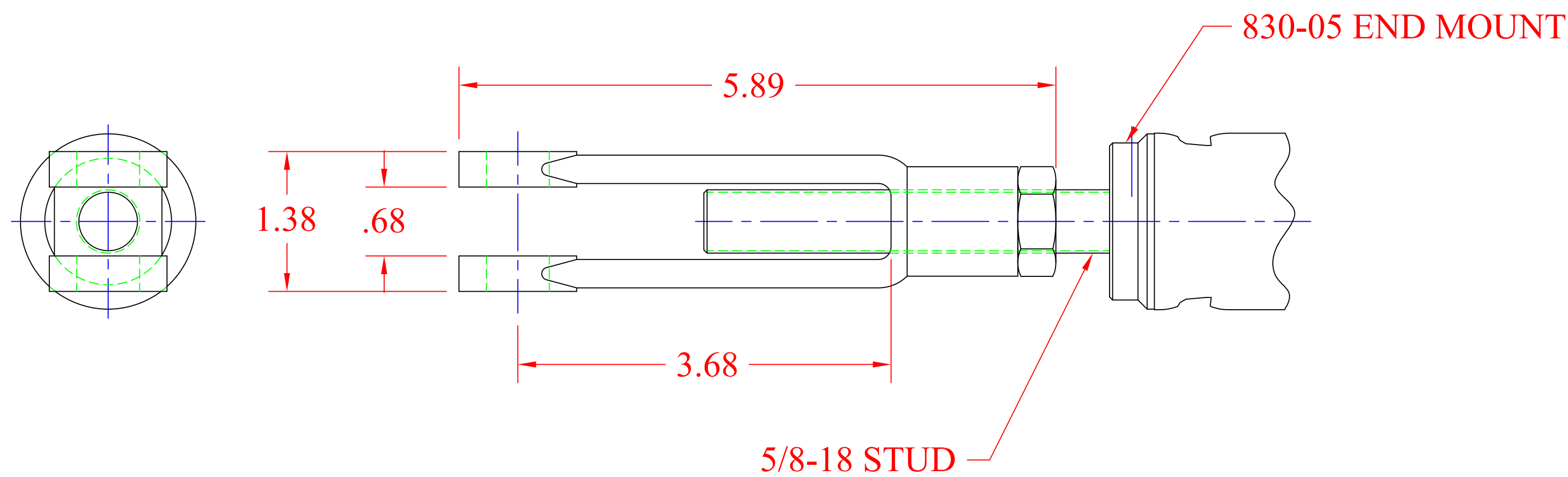
- T0 ~ 3/4-10 R.H. UNC THREAD
- T1 ~ 1/2-20 R.H. UNF THREAD
- T3 ~ 3/8-16 R.H. UNC THREAD
- T5 ~ 5/8-18 R.H. UNF THREAD
- T9 ~ SPECIAL (SPECIFY)



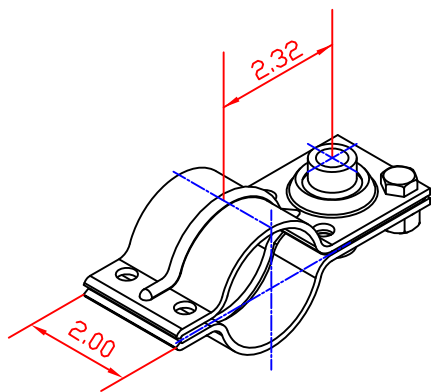
#4
UNIVERSAL END MOUNT
(SPECIFY DESIRED THREAD)



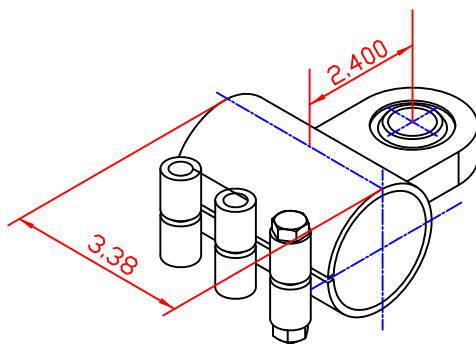
#5
CLEVIS END MOUNT



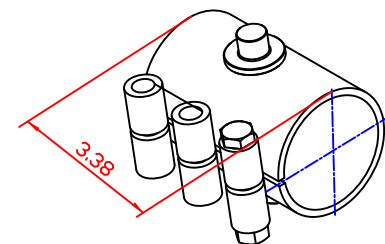
ACTUATOR TUBE END
MOUNTING OPTIONS



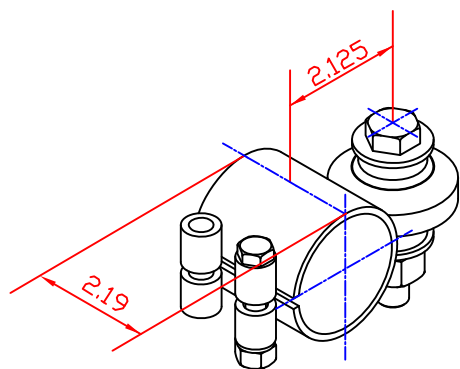
#3
STANDARD CLAMP
FOR 1/2" BOLT (818-20)



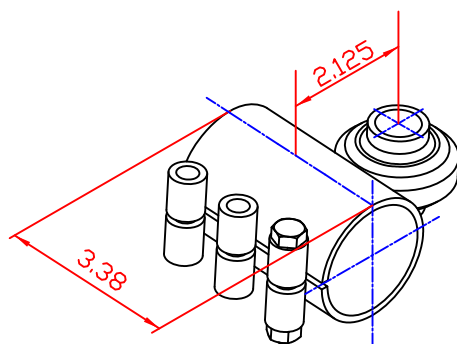
#5
HD LONG CS CLAMP
FOR 3/4" BOLT (818-51CS)



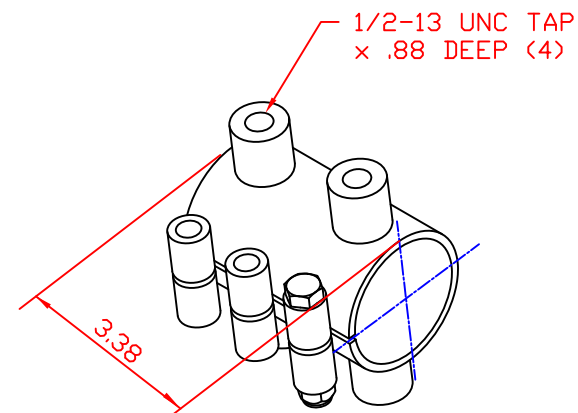
TRUNNION CLAMP
FOR 1/2" TRUNNIONS (818-55)



#4
HEAVY DUTY CLAMP
FOR 3/4" BOLT (818-50)



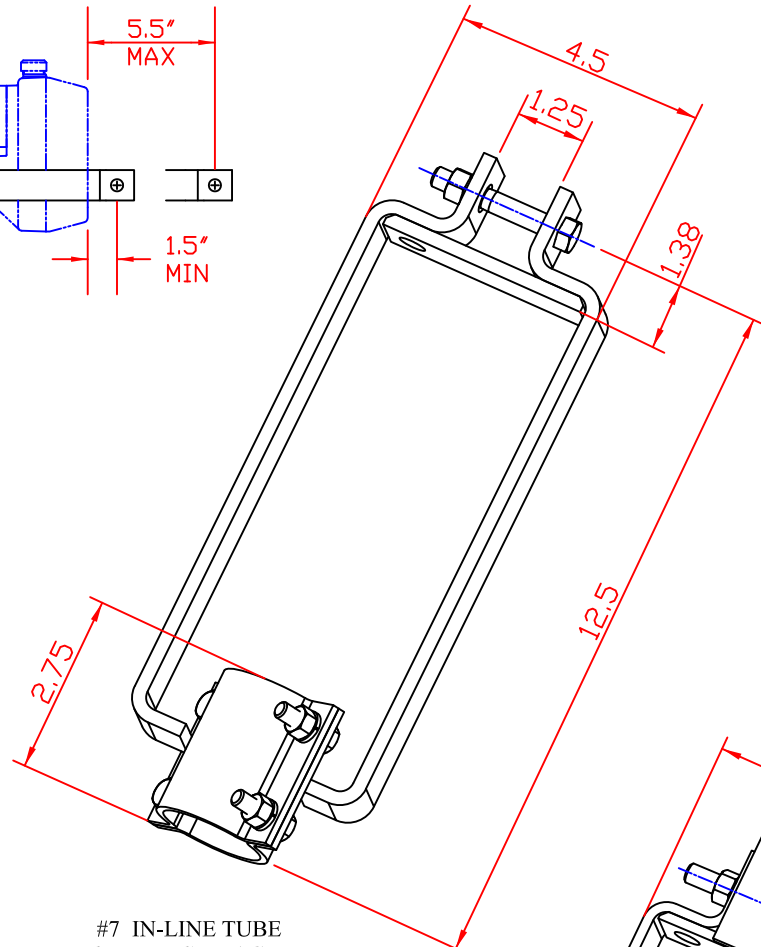
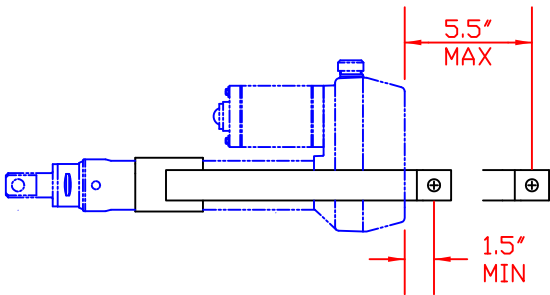
#6
HEAVY DUTY LONG CLAMP
FOR 3/4" BOLT (818-51)



#8
HD IN-LINE CLAMP
FOR 1/2" BOLT (818-52)

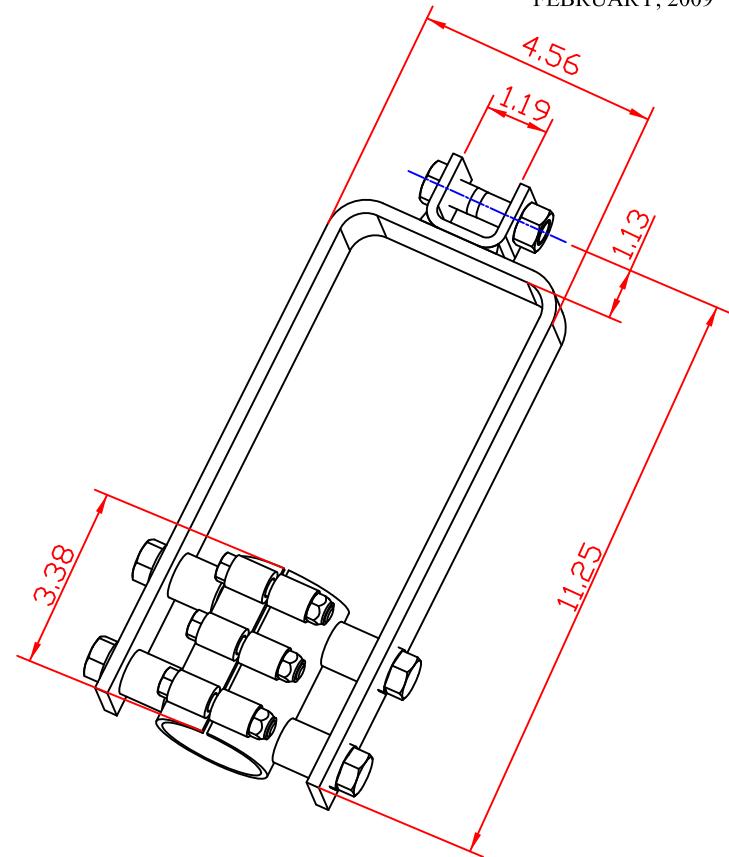
2" DIA. TUBE MOUNTING OPTIONS

NOTE: EACH SUPPLIED WITH ALL MOUNTING HARDWARE



#7 IN-LINE TUBE
MOUNTING BRACKET
FOR 1/2" BOLT
844-50

UNIVERSAL IN-LINE TUBE
MOUNTING BRACKET
844-51



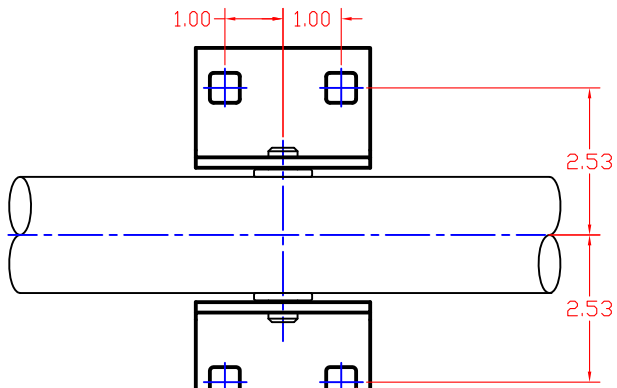
#2 HEAVY DUTY IN-LINE
TUBE MOUNTING BRACKET
FOR 1/2" BOLT
844-52

2" DIA. TUBE MOUNTING OPTIONS

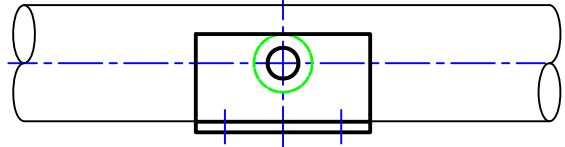
NOTE: EACH SUPPLIED WITH ALL
MOUNTING HARDWARE

SHEET NO. 4

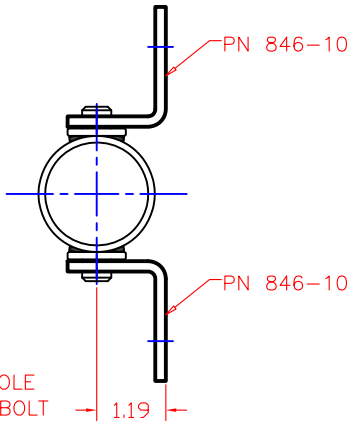
VENTURE MFG. CO.
3636 DAYTON PARK DRIVE
DAYTON OHIO 45414
TEL: (937)233-6832
FAX: (937)233-8485
WEB PAGE: www.venturemfgco.com



STD. .515 SQUARE HOLE FOR 1/2" CARRIAGE BOLT

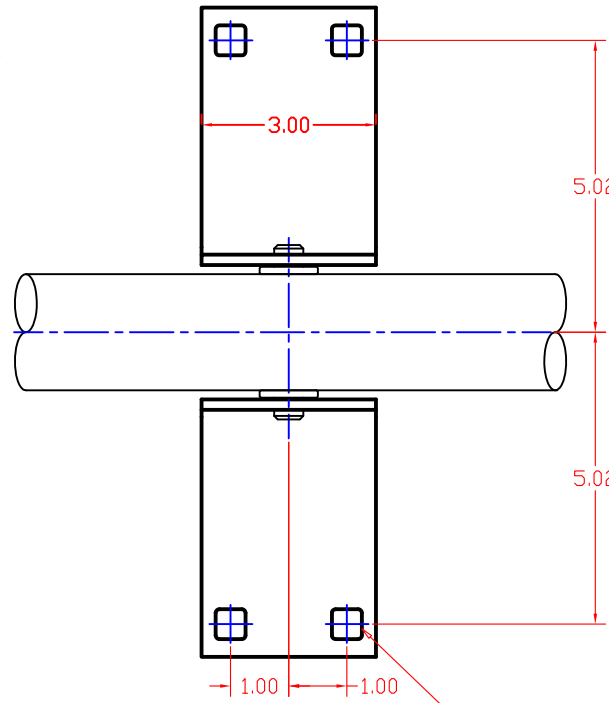


STANDARD MTG. OPTION ~ PN 846-20

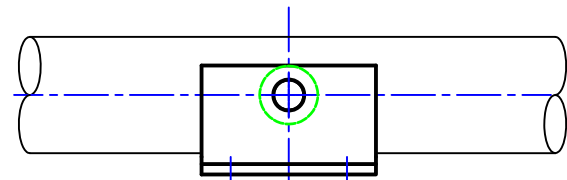


PN 846-10

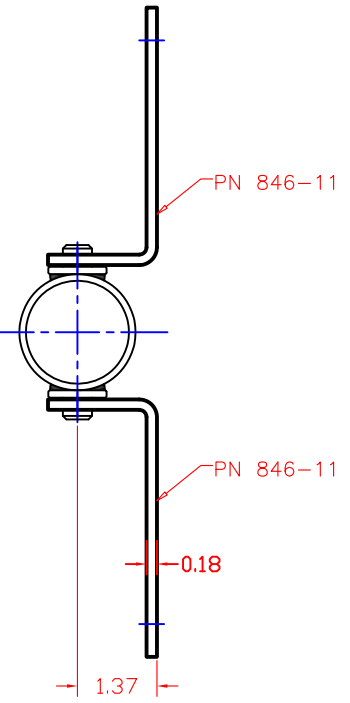
PN 846-10



STD. .515 SQUARE HOLE FOR 1/2" CARRIAGE BOLT



EXTENDED MTG. OPTION ~ PN 846-21

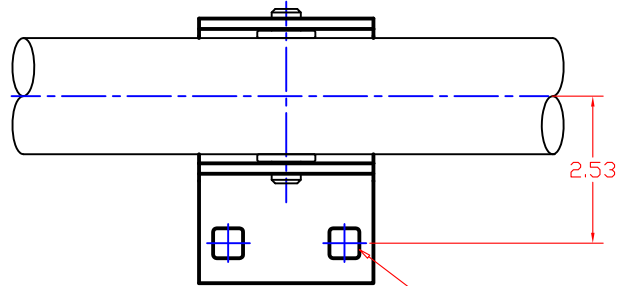


PN 846-11

PN 846-11

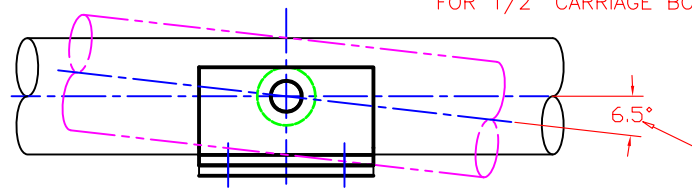
0.18

1.37



STD. .515 SQUARE HOLE FOR 1/2" CARRIAGE BOLT

PN 846-10



6.5°

TRAVEL IN EITHER DIRECTION

SIDE MTG. OPTION ~ PN 846-22

TRUNION MOUNTING OPTIONS

SHEET NO. 5

VENTURE MFG. CO.

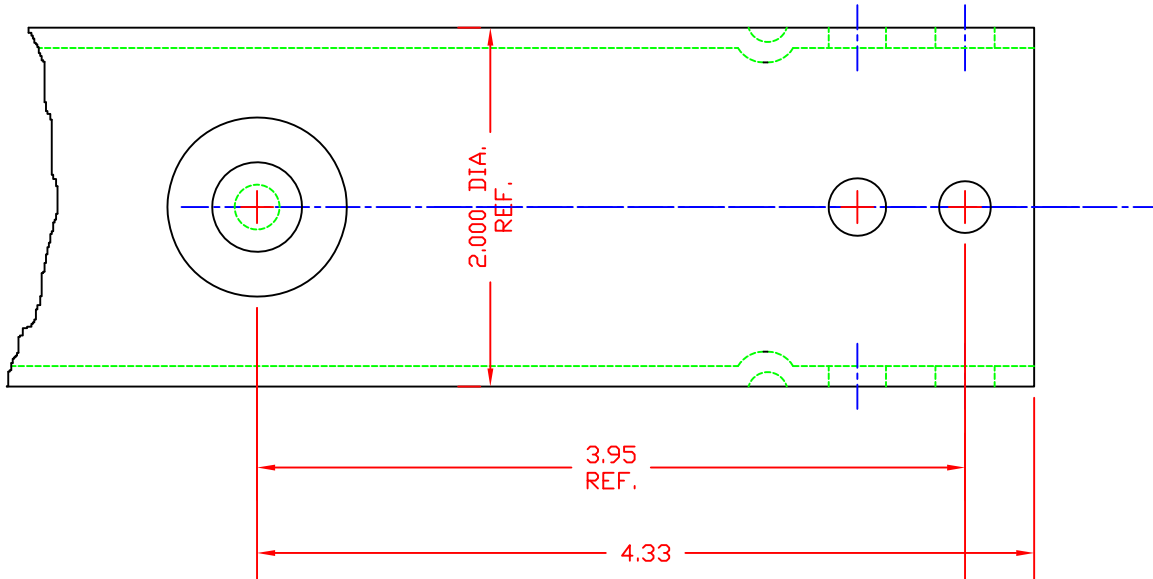
3636 DAYTON PARK DRIVE

DAYTON OHIO 45414

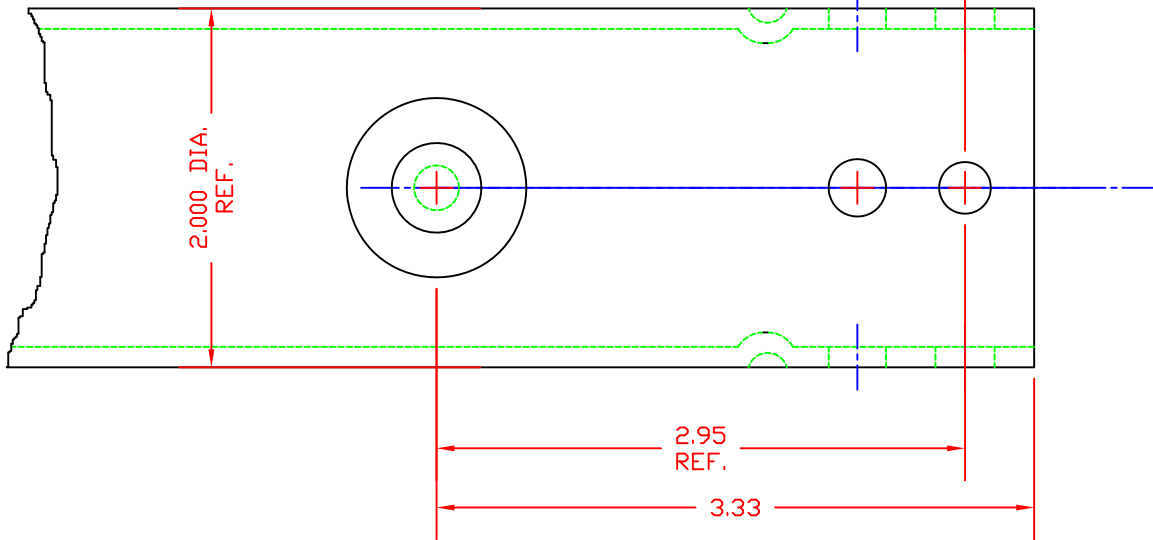
TEL: (937)233-6832

FAX: (937)233-8485

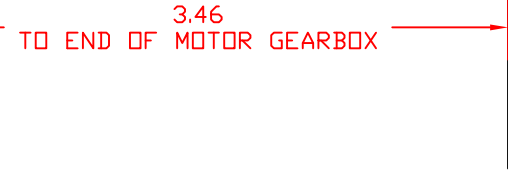
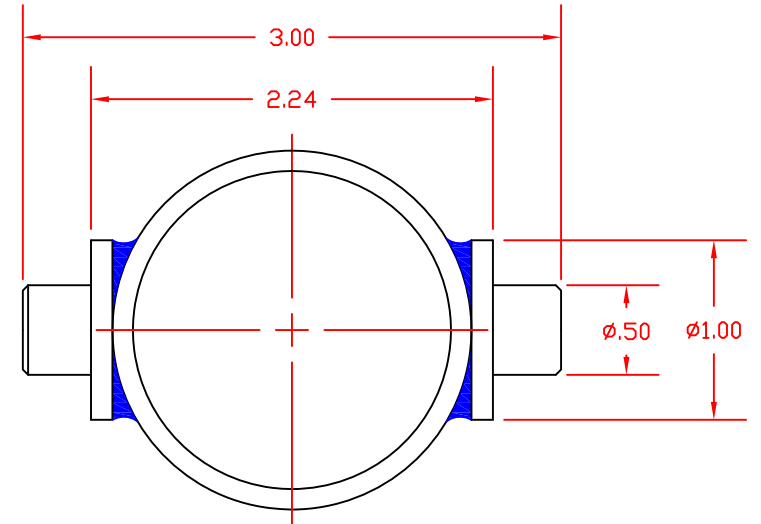
WEB PAGE: www.venturemfgco.com



TRUNNION MOUNTING - BALL SCREW



TRUNNION MOUNTING - ACME SCREW



TRUNNION MOUNTING

MA-800 SPECS SHEET #6

| | | | |
|------------------|------------------|--|--|
| DATE MAY 1998 | VENTURE MFG. CO. | | |
| SCALE FULL | A-800T | | |